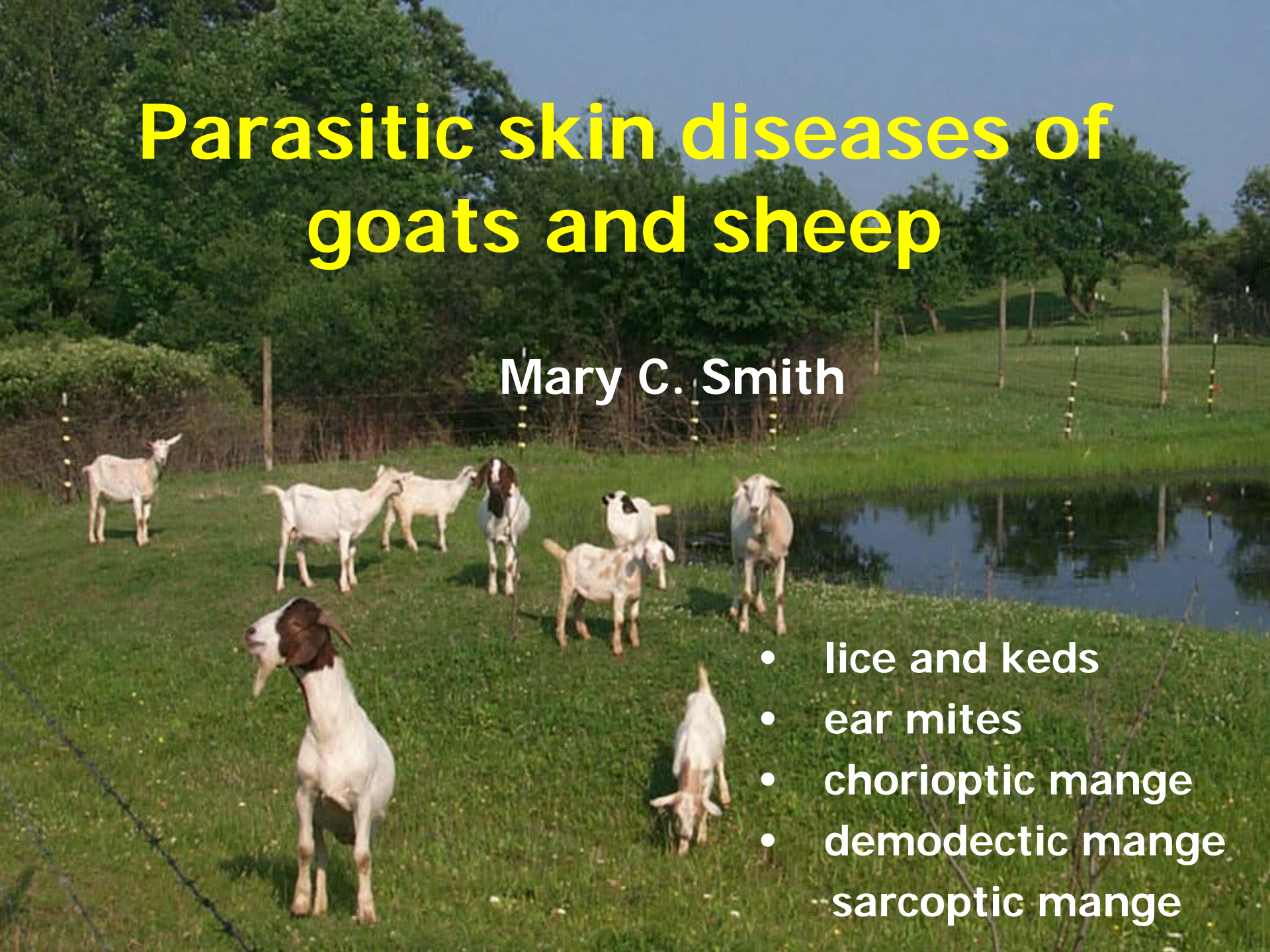


Parasitic skin diseases of goats and sheep

Mary C. Smith

- lice and keds
- ear mites
- chorioptic mange
- demodectic mange
- sarcoptic mange



Clinical signs

- pruritus
- rub, scratch, chew
- ragged fleece
- scratch at ears
- crusts
- nodules in skin
- anemia



Lice and keds



Louse infestation

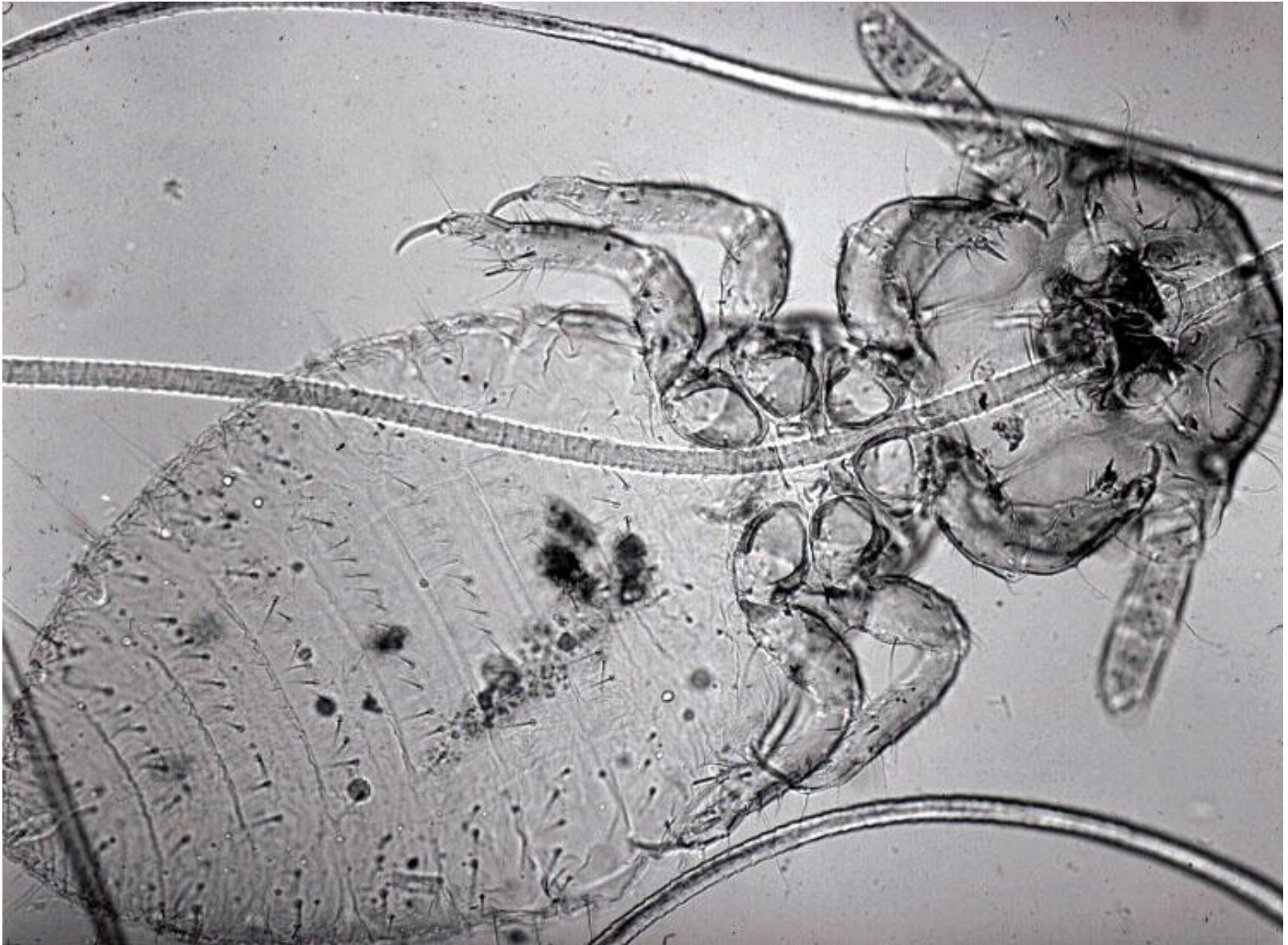


Lice

- Both biting and sucking



Damalinia – biting louse



Linognathus sucking louse





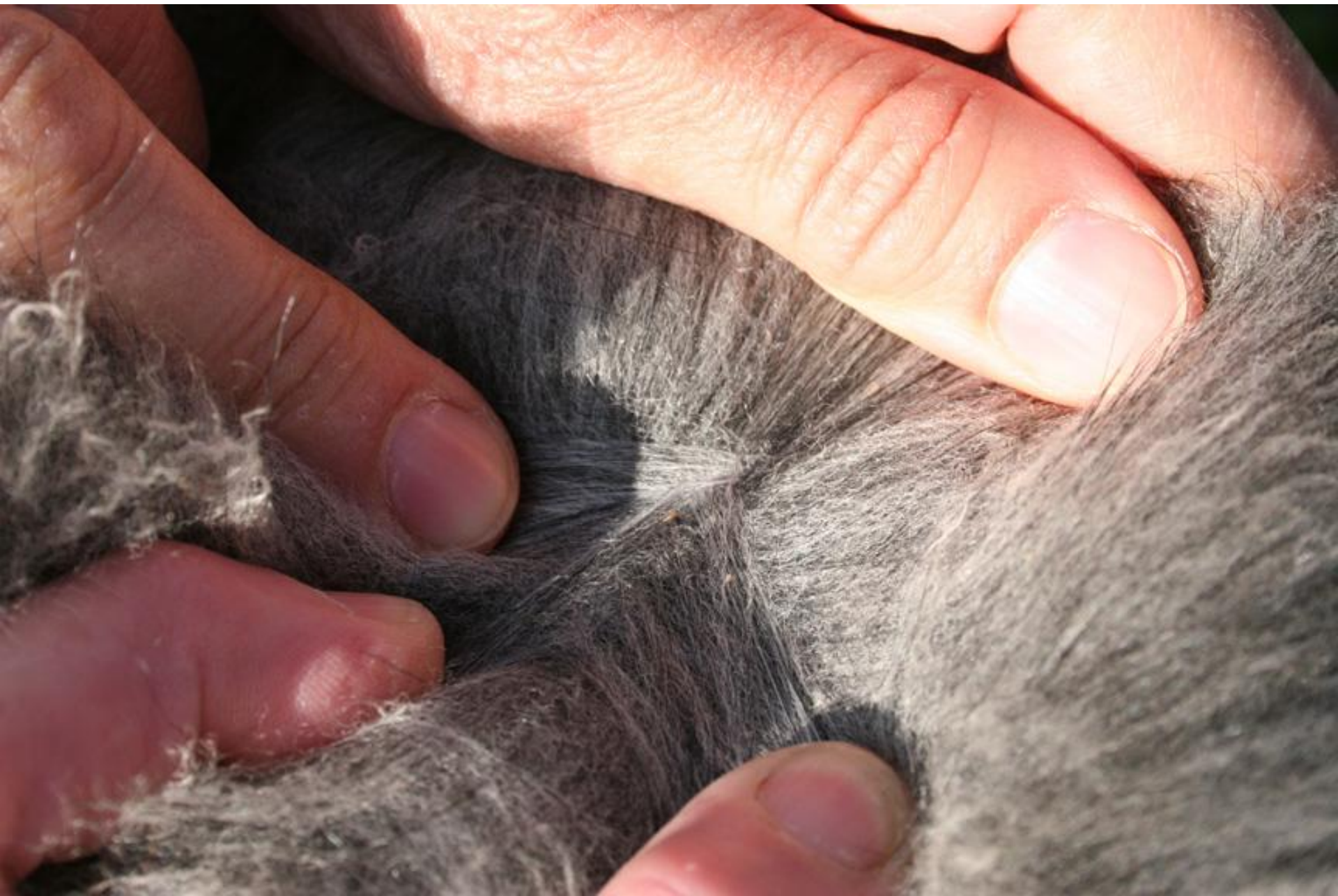
Melophagus ked ("sheep tick")



Diagnosis of external parasites

- fleece parting
- flea comb and dissecting scope (goats)
- skin scrapings for mites

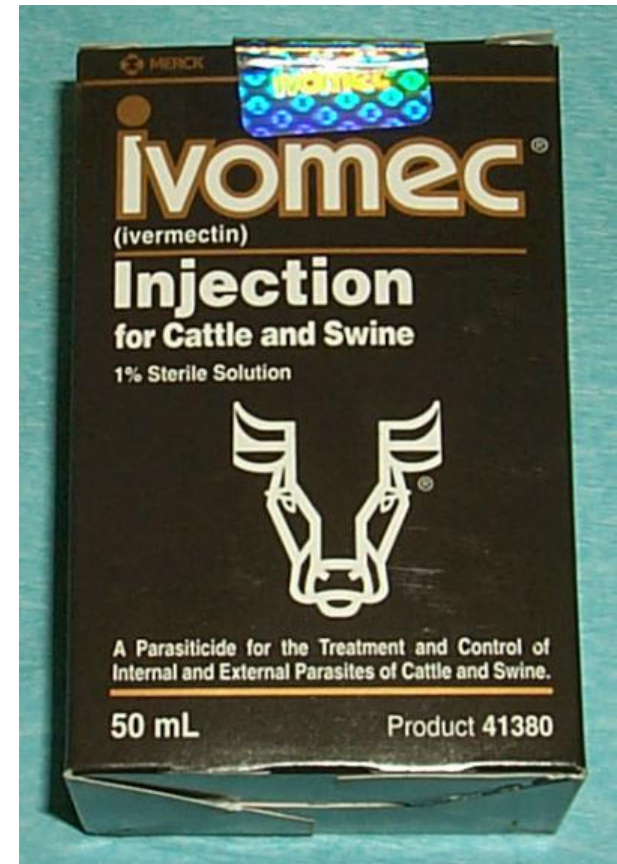






Treatment

- Shearing/clipping!!! Natural shedding in the spring also helps alleviate lice and mange problems
- **nondairy** animals - ivermectin if suck blood or burrow,
- goats 150-200% of sheep dose
- Eprinex (dairy)
- permethrins
- flea powders
- lime sulfur







Backliner for louse control



Ear mites



Mange mites

- chorioptic
- demodectic
- psoroptic
- sarcoptic



Chorioptic mange

- *Chorioptes ovis*
- *Chorioptes caprae*
- host specific
- surface dwelling, can scrape off crusts into ziplock bag to see if you can identify
- papules, crusts, erythema, alopecia
- lower limbs, scrotum, perineum
- lime sulfur, repeated eprinomectin

Chorioptes on goat pastern



Diagnose mites from pedicels on pretarsi



Sarcoptic mange

- *Sarcoptes scabiei* in goats
- very pruritic
- head, then generalized
- hyperkeratosis, alopecia, crusting, fissures
- Must take deep scrapings because this mite is very small and burrows deep to lay its eggs. KOH digestion necessary to see these mites. May be very difficult.
- **Nondairy** animals ivermectin subcut, eprinomectin orally. Prolate/Lintox-HD is also not licensed for dairy cattle within 28 days of freshening or any lactating dairy animals
- If lime-sulfur or other chemical sprays are used, apply spray with high pressure hydraulic equipment if at all possible to actually make contact with the mite



Sarcoptes mites

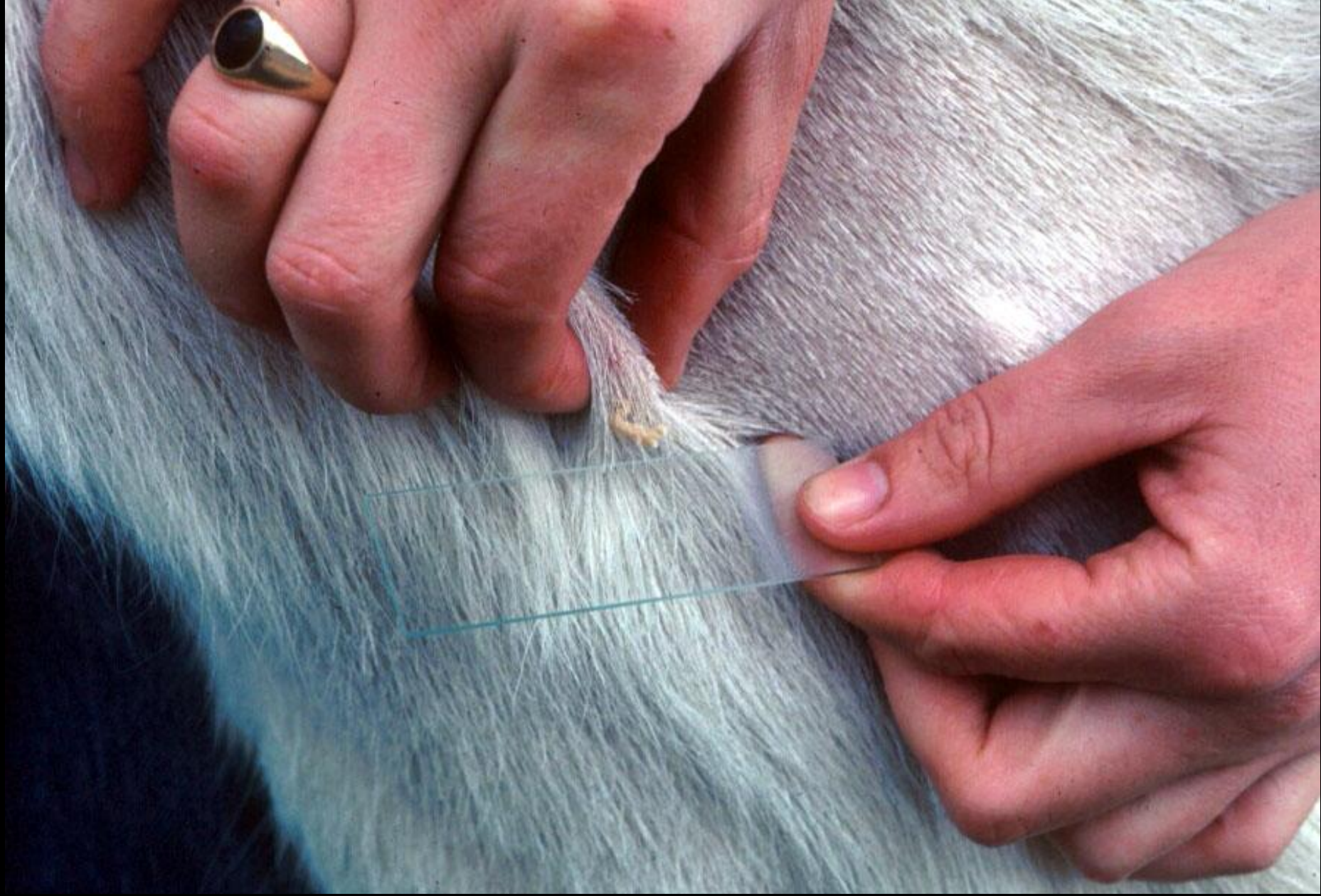
Long, unjointed
pedicels





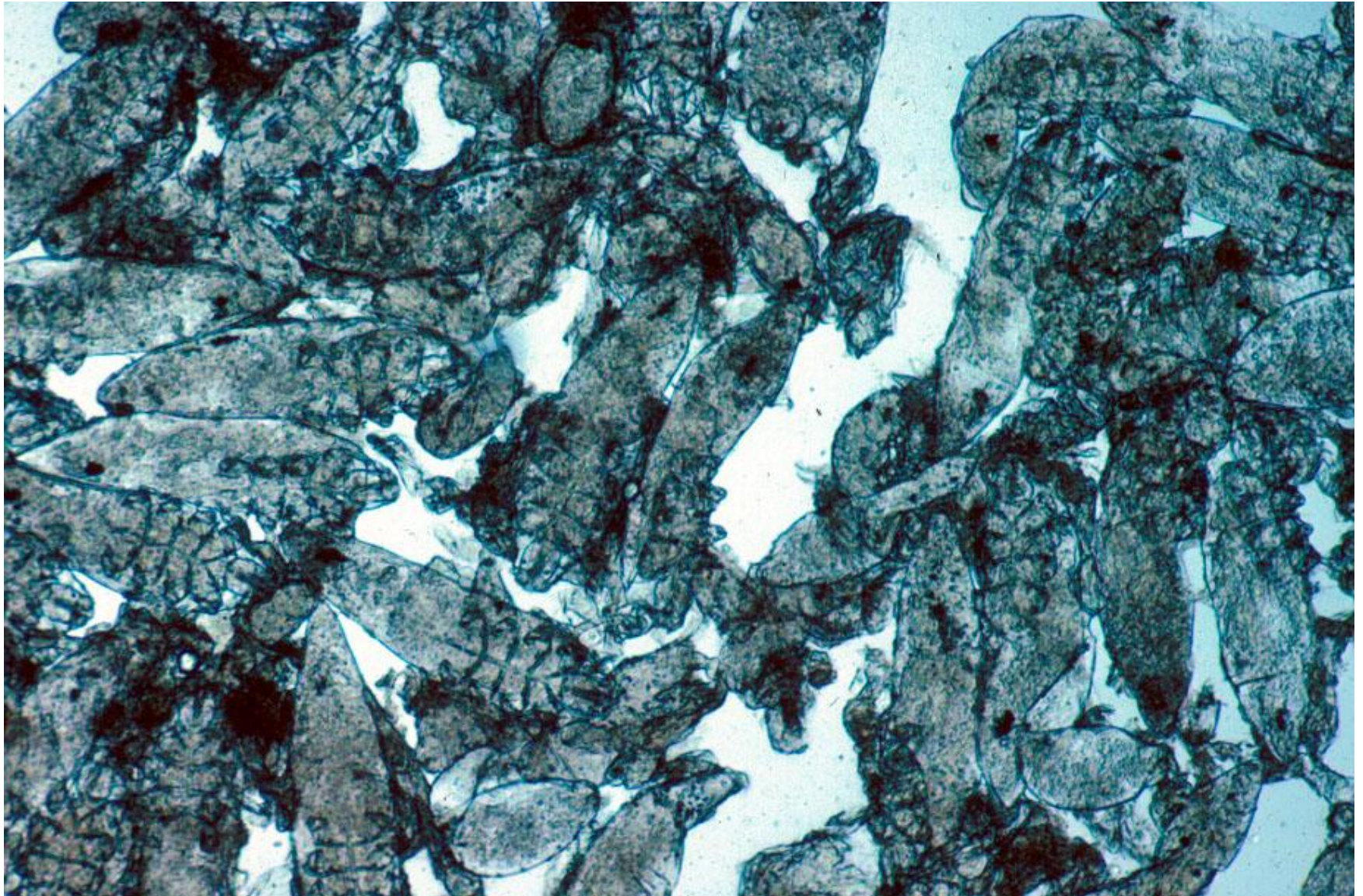
Demodectic mange

- *Demodex ovis*
- *Demodex caprae*
- cigar-shaped mites
- distend hair follicles – pea sized
- occasionally generalize
- topical amitraz, systemic avermectins



Demodectic mites are easy to find, as masses of them fill up the hair follicle that has been transformed into a skin nodule.

Demodex from a goat



Prevention of External Parasites

- When buying new animals – examine very carefully prior to purchase and segregate them from your animals for several weeks for close observation
- Work with your veterinarian to treat for mange and lice during quarantine with substances that are safe for your animal species. Special considerations if animals are lactating or in late pregnancy or herd/flock is organically certified.
- avoid purchase of resistant lice