

# Review of 2015

## Hudson Valley Research Laboratory



- **HVRL Inc.**
  - Membership
  - Partnerships
- **Research Trials**
  - Cornell Horticulture, Plant Pathology & Entomology
  - ENYCH Extension
- **Web based outreach**



Cornell University  
College of Agriculture and Life Sciences

Hudson Valley  
Research Laboratory

# Review of 2015

## Hudson Valley Research Laboratory

### **HVRL Inc. 501 ( C ) 3 not for profit**

- Governed by a 11 member Board of Directors
- Yearly grower membership is a \$500.00 donation
- Operations and maintenance of the facility
- Partnership requirements between CALS & HVRL

### **CALS Requirements: Economic Sustainability**

- Members / other Ag supprt partners provide  
3 years of operating expences (Banked)
- CALS supports 2 University faculty and 2 staff



# Review of 2015

## Hudson Valley Research Laboratory

### **HVRL Inc.**

### **CALS Requirements: Safety of field and laboratory**

- Meet all safety requirements
  - Worker safety (Woelfersheim)
    - Yearly training and respirator fit tests
  - Buildings, farm and laboratory equipment
    - Laboratory, pesticide facility, barns
  - State fire codes
    - Equipment inspections



# Review of 2015

## Hudson Valley Research Laboratory

### HVRL Inc.

#### Partnerships:

- Local Economies Project
  - Grant \$100,000/year for 3 years
  - 2016 Year 3
- Developing strategic planning for Agricultural Director
  - Long term sustainability
    - *Agricultural Director* for HVRL – Funding opportunities
      - Crowd Source Funding
      - Traditional grant funding



# Review of 2015

## Hudson Valley Research Laboratory

- **Web based outreach**

- HVRL Web Site
- 'Jentsch Lab' Blog Site
  - Subscription (free) – Email – 1-click 'Link to site'
  - Insect pest management updates
  - Archived efficacy trials
- Plant Pathology Blog Site: Dr Rosenberger
  - Subscription (free) – Email – 1-click 'Link to site'
  - Pest management updates
  - Archived



# Hudson Valley Research Laboratory

Agricultural Research and Extension On Fruits and Vegetables Since 1923

WELCOME

PROGRAM HIGHLIGHTS

RESEARCH FACULTY & STAFF

SUPPORTING FOOD SECURITY

ABOUT US

CONTACT



## Welcome



*Developing a Sustainable Model for Agricultural Research and Extension*

Ideally located in the heart of the fertile Hudson Valley growing region, the Hudson Valley Research Laboratory in Highland, New York, is a critical resource for this major production area of pome fruit and vegetable in Ulster County.

The scientists and researchers affiliated with the HVRL are dedicated to solving agricultural pro-

duction problems, with an emphasis on the communication of time-sensitive information to growers.

The HVRL is an independent 501(c)3 organization. A key partnership is this research is with [Cornell University's College of Agriculture and Life Sciences](#), a relationship that has evolved over time. Since 2013, in an effort to most effectively reach the broad needs of stakeholders in this region, the model for funding and collaboration has been growing to become a model of public-private partnerships in support of agricultural research.



Golden Delicious at harvest

## SUPPORT SUSTAINABLE FARMING PRACTICES IN THE NORTHEAST

We need your help to continue providing research and education to the local and regional farming community.

For more information navigate to our Support Food Security Page. The HVRL is an independent 501(c)3 organization. Tax deductible donations can be made directly to:

Hudson Valley Research Lab, Inc.  
P.O. Box 727  
3357 US Highway 9W  
Highland, NY 12528

Ph: 845.691.7151



Provides:

- Grower Navigation

Links to:

- New Employees
- Media
- Gov't.
- Supporters

Maintains

- Archived Reports
- History of HVRL



# THE JENTSCH LAB

INSECT BIOLOGY, ECOLOGY, AND MANAGEMENT IN HUDSON VALLEY AGRICULTURAL COMMODITIES



Provides:

- Production pest management updates

Maintains Archived:

- Efficacy Reports
- Weekly alerts & Yearly presentations

WELCOME

ENTOMOLOGY

BROWN MARMORATED STINK BUG

INVASIVES

ORGANIC AG. RESEARCH

TREE FRUIT

VEGETABLE

SWEET CORN

SMALL FRUIT

GRAPE

IN THE NEWS

## Welcome to the Jentsch Lab



HVRL ENTOMOLOGY STAFF

Our research and extension outreach program is directed by [Cornell University's Department of Entomology](#) and located at the [Hudson Valley Laboratory, in Highland, NY](#). We are a part of the [New York State Agricultural Experiment Station in Geneva, NY](#), with the laboratory building owned by a non-profit cooperative tree fruit grower organization (HVRL Inc.). This cooperative partnership with the [College of Agriculture and Life Science \(CALS\)](#) and [Cornell Cooperative Extension \(CCE\)](#) has provided agricultural Research and Extension on Tree Fruits and Vegetables in the Hudson Valley since 1923. Research-based information continues to be provided to New York farmers through educational programs organized by Cornell Cooperative Extension and participating associations. Horticultural plant protection programs at the Hudson Valley Lab are especially important to

sustaining the viability of agriculture in the Hudson Valley and Northeast as agricultural production is ultimately the best way to preserve open space and economic stability in the rapidly developing corridor between Albany and New York City.

Search

### ARCHIVES

- [January 2016](#)
- [November 2015](#)
- [October 2015](#)
- [September 2015](#)
- [August 2015](#)
- [July 2015](#)
- [June 2015](#)
- [May 2015](#)
- [April 2015](#)
- [March 2015](#)
- [February 2015](#)
- [January 2015](#)
- [December 2014](#)
- [November 2014](#)
- [October 2014](#)
- [September 2014](#)
- [August 2014](#)
- [July 2014](#)
- [June 2014](#)
- [May 2014](#)
- [April 2014](#)

# Summary of Research and Extension Activities at Hudson Valley Research Laboratory for 2013 – 2015

Dave Rosenberger, Plant Pathologist (Retired)  
Gemma Reig Cordoba, Horticulturist  
Peter Jentsch, Entomologist  
Albert Woelfersheim, Facilities Coordinator  
Dan Donahue, ENY Horticulture Team Tree Fruit Specialist  
With contributions from Ulster County Extension Educators  
Teresa Rusinek, Jim O'Connell



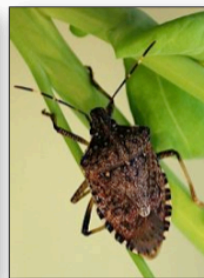
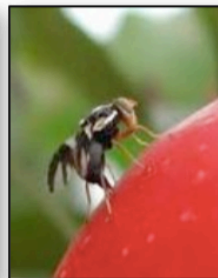
# RESULTS OF 2015 INSECTICIDE AND ACARICIDE STUDIES IN EASTERN NEW YORK

P. J. Jentsch  
Senior Extension Associate Entomologist

Cornell University's Hudson Valley Research Lab  
P.O. Box 727 Highland NY 12528

Tel: 845-891-6516  
FAX: 845-891-2719  
Mobile: 845-417-7465  
e-mail: [pjj5@cornell.edu](mailto:pjj5@cornell.edu)

## Native and Emerging Insect Management for Tree Fruit In Eastern NY



**Long Island Agricultural Forum**  
January 14, 2016  
Suffolk County Community College; Eastern Campus  
Riverhead, New York Peconic Building.

**Peter Jentsch**  
Senior Extension Associate – Entomology



Technician ..... Tim Lampasona  
Support Technician ..... Hank Grimsland  
Research Assistant ..... Mike Fraatz  
Research Assistant ..... Jared Jaeger  
Research Assistant ..... Jonathan Binder  
Research Assistant ..... Kathrine Aponte  
Research Volunteer ..... Zachary Coto

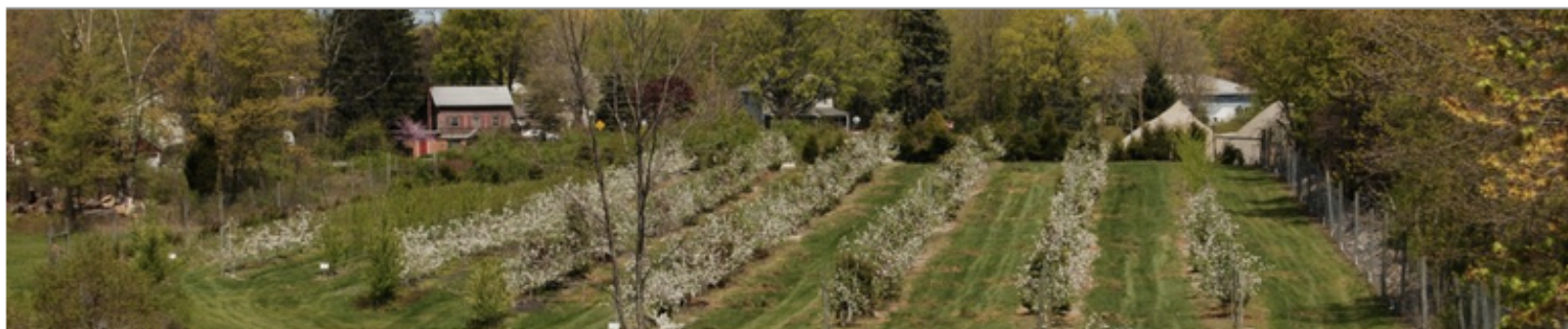
Manager ..... Albert Woelfersheim  
Administrative Assistant ..... Donna Clark  
NEWA Weather Data ..... Joe Whalen

NOT FOR PUBLICATION OR DISTRIBUTION  
OUTSIDE RESEARCH OR DEVELOPMENT GROUPS



# PLANT PATHOLOGY AT THE HUDSON VALLEY LAB

HISTORICAL REPORTS AND CONTINUING UPDATES FROM DR. DAVE ROSENBERGER



[HOME](#) [BLOG](#) [APPLE DISEASES](#) [STONE FRUITS](#) [RESEARCH RPTS](#) [HVL HISTORY](#) [DAVE'S BIO](#) [BEYOND SCIENCE](#)

## Background and Purpose

Although I retired in February of 2014 after 36 years as the tree fruit disease specialist at Cornell's Hudson Valley Laboratory, I am still very interested in the both historical and recent developments in my profession (plant pathology) and in the commercial fruit industry in the Hudson Valley. Over the two years since I retired, I have continued to attend scientific conferences and fruit grower meetings so as to stay informed about new developments. This website serves as an archive for some of the information, observations, and photos generated during my career. The blog within this website provides a mechanism sharing seasonal observations and/or developments that may be of interest to fruit growers and fruit extension professionals.

The the specific objectives for this website are to provide the following:

- An on-going [BLOG](#) of observations and seasonal events that relate to tree fruit diseases and their control in the mid-Hudson Valley based on observations from orchards at the Hudson Valley Lab in Highland, NY or from nearby commercial orchards

**NOTE:** Those wishing to receive e-mail alerts when I post updates on the blog-page should

.....

### CORNELL UNIVERSITY IN THE HUDSON VALLEY:

Agricultural Research and  
Extension on Tree Fruits and  
Vegetables since 1923

Photo above: One of the research  
orchards at the Hudson Valley Lab.

### SEARCH THIS SITE

### SUBSCRIBE FOR E-MAIL ALERTS FOR NEW POSTS:

### RECENT BLOG POSTS

- [RIMpro, A Useful Apple Scab  
Model for 2016](#) 21 Jan 2016

# PLANT PATHOLOGY AT THE HUDSON VALLEY LAB

HISTORICAL REPORTS AND CONTINUING UPDATES FROM DR. DAVE ROSENBERGER



---

[HOME](#) [BLOG](#) [APPLE DISEASES](#) [STONE FRUITS](#) [RESEARCH RPTS](#) [HVL HISTORY](#) [DAVE'S BIO](#) [BEYOND SCIENCE](#)

---

## RIMpro, A Useful Apple Scab Model for 2016

RIMpro contains a proprietary apple scab model that is useful for (i) identifying the start of the scab season, (ii) quantifying risks associated with key infection periods between green tip and first cover, and (iii) determining the end of the primary scab season. RIMpro will provide more accurate information on apple scab infection risk than the traditional pseudothecial squash mounts that have been used for many years to assess apple scab ascospore maturity in spring. I've been working with RIMpro on a trial basis for the past two seasons, and I'm very impressed with the apple scab model. I suspect that over the next few years it will become as important for apple scab management as MaryBlyt has become from fire blight management.

More information about RIMpro is available in [this PDF file](#).

For information about a meeting to introduce RIMpro and a special RIMpro subscription offer for 2016, go to <http://www.redtomato.org/summit/>.

# Review of 2015 Hudson Valley Research Laboratory

- **Research Trials**

- Cornell Horticulture, Plant Pathology & Horticulture
- ENYCH Extension Activities

## Annual Report

Hard Copy (Available today)

Membership

HVRL / 'Jentsch Lab' web sites

### Summary of Research and Extension Activities at Hudson Valley Research Laboratory for 2013 – 2015

Dave Rosenberger, Plant Pathologist (Retired)

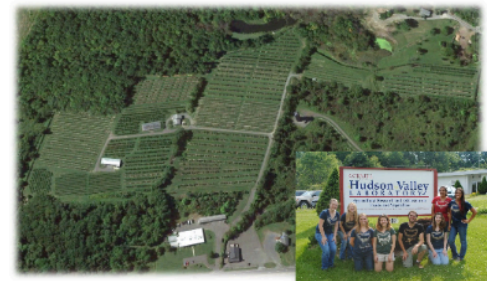
Gemma Reig Cordoba, Horticulturist

Peter Jentsch, Entomologist

Albert Woelfersheim, Facilities Coordinator

Dan Donahue, ENY Horticulture Team Tree Fruit Specialist

With contributions from Ulster County Extension Educators  
Teresa Rusinek, Jim O'Connell



Highland, NY  
Released February 2016  
(V.1)



Cornell University

Hudson Valley Research Laboratory

# Review of 2015 Hudson Valley Research Laboratory

## Hudson Valley Research Lab, Inc. – Partnership Campaign

<b>2015 Partnership</b>		<b>2016 Partnership</b>
<u>Jan 1 – Dec 31, 2015</u>		<u>Jan 1 – Feb 15, 2016</u>
50.00		50.00
100.00		200.00
100.00		250.00
250.00		250.00
250.00		400.00
250.00		500.00
300.00		500.00
500.00		500.00
500.00		500.00
500.00		500.00
500.00		500.00
500.00		500.00
500.00		500.00
500.00		500.00
500.00		500.00
500.00		500.00
500.00		500.00
500.00		500.00
500.00		500.00
500.00		500.00
500.00		500.00
500.00		500.00
500.00		500.00
500.00		500.00
500.00		500.00
500.00		500.00
500.00		500.00
500.00		500.00
500.00		500.00
500.00		500.00
500.00		500.00
500.00		500.00
500.00	500.00	500.00
500.00	500.00	500.00
500.00	500.00	500.00
500.00	500.00	500.00
500.00	500.00	500.00
500.00	500.00	500.00
500.00	500.00	500.00
500.00	1,000.00	700.00
500.00	1,000.00	750.00
500.00	1,000.00	1,000.00
500.00	1,600.00	1,000.00
500.00	100,000.00	3,000.00
	<b>\$125,900.00</b>	<b>\$23,100.00</b>

## HVRL Membership

Yearly maintenance and operations costs 2014-16: \$80,000

2015 : 51 contributors  
12 mo. \$25,900

2016: 41 contributors  
1.5 mo. \$23,100

# Review of 2015

## Hudson Valley Research Laboratory

02/15/16

Hudson Valley Research Lab, Inc  
Balance Sheet Prev Year Comparison  
As of February 15, 2016

	Feb 15, '16	Feb 15, '15	\$ Change	% Change
<b>ASSETS</b>				
Current Assets				
Checking/Savings				
savings xxx524				
partnership campaign	419,716.78	316,616.78	103,100.00	32.6%
savings xxx524 - Ot...	20,181.41	18,479.64	1,701.77	9.2%
Porpiglia Memorial	4,005.00	4,005.00	0.00	0.0%
Bowman Memorial	2,035.00	2,035.00	0.00	0.0%
Coy Memorial	550.00	550.00	0.00	0.0%
Hepworth Memorial	475.00	375.00	100.00	26.7%
Lawrence Memorial	1,625.00	0.00	1,625.00	100.0%
Truncali Memorial	1,050.00	0.00	1,050.00	100.0%
Total savings xxx524	449,638.19	342,061.42	107,576.77	31.5%
checking				
Jentsch	66,830.42	22,617.16	44,213.26	195.5%
HVRL, Inc	13,727.52	17,145.43	-3,417.91	-19.9%
Total checking	80,557.94	39,762.59	40,795.35	102.6%
Total Checking/Savings	530,196.13	381,824.01	148,372.12	38.9%
Accounts Receivable				
Accounts Receivable	0.00	750.00	-750.00	-100.0%
Total Accounts Receiva...	0.00	750.00	-750.00	-100.0%
Total Current Assets	530,196.13	382,574.01	147,622.12	38.6%
<b>TOTAL ASSETS</b>	<b>530,196.13</b>	<b>382,574.01</b>	<b>147,622.12</b>	<b>38.6%</b>
<b>LIABILITIES &amp; EQUITY</b>				
Equity				
Retained Earnings	390,662.02	261,160.20	129,501.82	49.6%
Opening Balance Equity	123,414.44	123,414.44	0.00	0.0%
Net Income	15,995.51	-2,120.76	18,116.27	854.2%



# Review of 2015

## Hudson Valley Research Laboratory

02/15/16

### Hudson Valley Research Lab, Inc Balance Sheet Prev Year Comparison As of February 15, 2016

	Feb 15, '16	Feb 15, '15	\$ Change	% Change
Total Equity	530,071.97	382,453.88	147,618.09	38.6%
Liabilities				
Current Liabilities				
Credit Cards				
Albert Woefersheim	124.16	120.13	4.03	3.4%
Total Credit Cards	124.16	120.13	4.03	3.4%
Total Current Liabilities	124.16	120.13	4.03	3.4%
Total Liabilities	124.16	120.13	4.03	3.4%
TOTAL LIABILITIES & EQUI...	530,196.13	382,574.01	147,622.12	38.6%

# Thank You



For the Faithful Support from the Tree Fruit Industry



Cornell University

Hudson Valley Research Laboratory