

Flower Part Identification

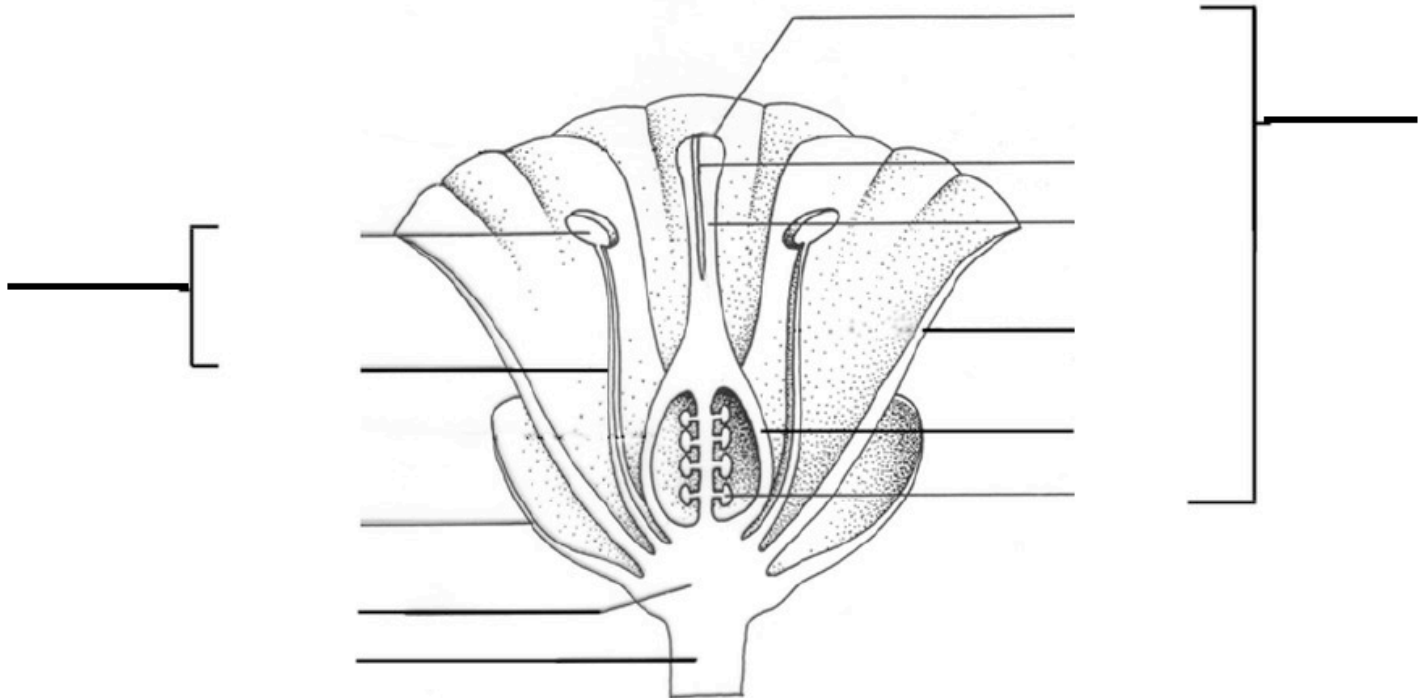
This self-check worksheet aims to help you practice and evaluate your understanding of botany terminology in identification of plant characteristics.

Activity Time: 5 to 10 minutes

Guiding Question: How is shared terminology valuable when cultivating plants in garden settings?

Activity:

- Study the drawing below and then write the plant part name on the line.



- Is this an image of a perfect or imperfect flower? What characteristic distinguishes the two?
- Is this an image of a complete or incomplete flower? What characteristic distinguishes the two?
- What additional information do you need to decide if this image is of a regular or irregular flower?

Learn more: www.gardening.cornell.edu

Published: August 2016

Author: Barbara Neal – Cornell Cooperative Extension Tioga County

Reviewer: Lori J. Brewer - Cornell Garden-Based Learning, Horticulture

Building Strong and Vibrant New York Communities

Cornell Cooperative Extension provides equal program and employment opportunities.