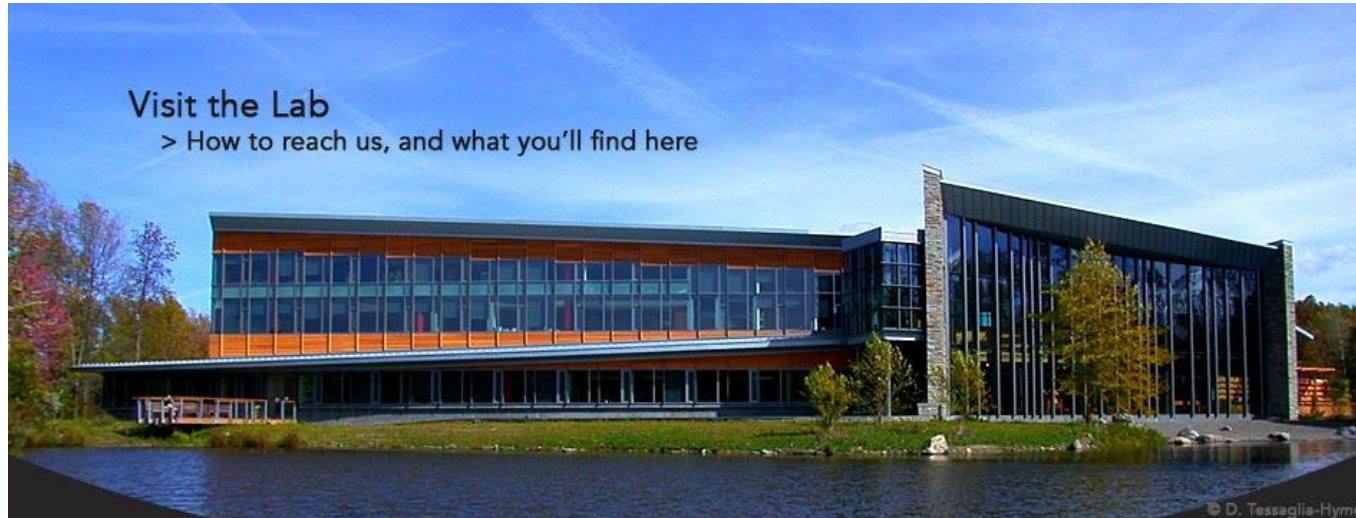


Lab of Ornithology trips

- Daily trips to “Lab of O” (~12-18 students/day)
- Habitats: swampy & mesic forest, forest edge, successional fields, pond/marsh (different tree species!)
- Bird walks - led by undergrad & graduate students, staff (bird ID, creating eBird checklists)
- Mist-netting and bird banding





- 250 staff (some faculty at Cornell)
- Programs: Bioacoustics, Citizen Science, Conservation Science, Education, Evolutionary Biology, Information Science, Macaulay Library, Vertebrate Museum
- Visitor's Center (mural of birds, gift shop)
- Website: <http://www.birds.cornell.edu/>

Field Biology - Birds

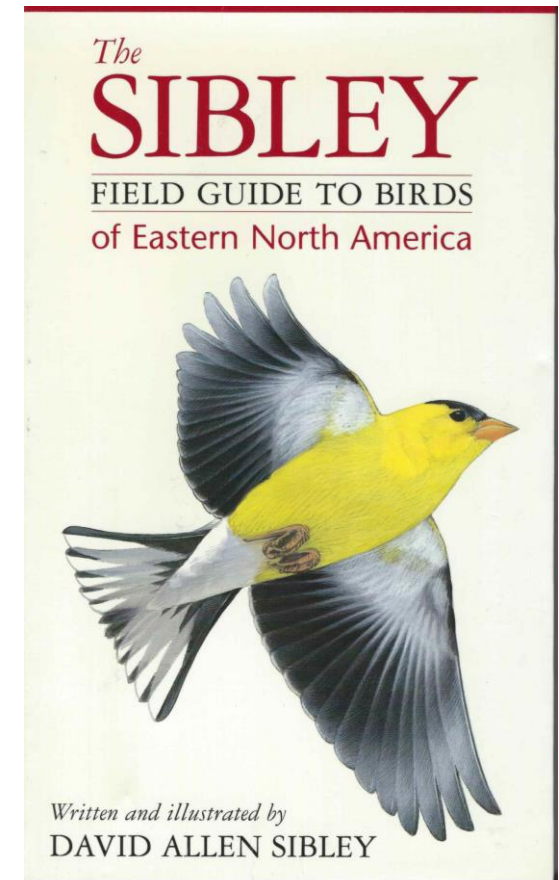
Fall 2016



Learning the Bird Content in Field Biology

- ID powerpoint has 65 species to learn (only need to learn common name). ~35 of these are in this powerpoint.
- Outdoor labs involving birding
- Specimen collection (In Rice Hall; we'll do a lab later in semester using these)
- Sibley field guide (recommended, but not required)
- Additional information in Cornell's "All About birds" website (see links for each species)

Also: Birding Club at Cornell
(<https://orgsync.com/73409/chapter>)





Canada Goose

http://www.allaboutbirds.org/guide/Canada_Goose/id

- Large brown goose, black neck, white facial patch
- Marshes, ponds, lakes, lawns, agricultural fields
- Diet: aquatic vegetation, young grass, grain





male

- Male: green head, chestnut breast, pale sides
- Female: mixed browns, note “speculum” pattern
- Marshes, ponds, lakes, rivers
- Diet: aquatic vegetation, small invertebrates

Mallard

<http://www.allaboutbirds.org/guide/Mallard/id>



female



female

Wood Duck

http://www.allaboutbirds.org/guide/Wood_Duck/id



male

- Male: green, 'crested' head, chestnut breast, buffy sides
- Female: gray-brown, crested head, white eye-patch
- Swamps, marshes, wooded areas (cavity nester)
- Diet: seeds, aquatic invertebrates



Great Blue Heron

[http://www.allaboutbirds.org/guide/Great Blue Heron/id](http://www.allaboutbirds.org/guide/Great%20Blue%20Heron/id)



- Large, tall bird, blue-gray body, black & white stripes on head, long pointed bill
- Marshes, lakes, ponds, riparian areas
- Diet: fish and other small vertebrates



Turkey Vulture

http://www.allaboutbirds.org/guide/Turkey_Vulture/id



- Large brown/black raptor; not two-tone pattern in underwing; bare skin on head less visible in flight
- Often soaring; uses diverse open habitats
- Diet: carrion





Red-tailed Hawk

http://www.allaboutbirds.org/guide/Red-tailed_Hawk/id

- Large brown raptor; rusty tail in adults; note “belly band”
- Open habitats (grassland, agriculture, suburban)
- Diet: small vertebrates, especially mammals



Mourning Dove

http://www.allaboutbirds.org/guide/mourning_dove/id



- Gray-brown dove, pointy tail
- Open habitats (grassland, agriculture, suburban)
- Diet: seeds, small grains



Red morph

- Small owl, gray or red phase, small ear tufts
- Wooded areas, common
- Diet: small vertebrates, larger insects

Eastern Screech-Owl

http://www.allaboutbirds.org/guide/Eastern_Screech-Owl/id



Red and gray morphs



male

- Greenish above, pale below, only male has iridescent red throat, long thin bill.
- Forest and forest edge
- Flower nectar, small insects

Ruby-throated Hummingbird

http://www.allaboutbirds.org/guide/Ruby-throated_Hummingbird/id

http://www.allaboutbirds.org/guide/Ruby-throated_Hummingbird/videos

<https://www.youtube.com/watch?v=yvqaKhjrCD8>



female



male

Belted Kingfisher

http://www.allaboutbirds.org/guide/Belted_Kingfisher/id

female



- Blue-gray above, 'shaggy' crest, white below with 1-2 breast bands (female has 2 bands!)
- Riparian areas, lakes, ponds, marshes
- Diet: Plunge-dives for fish, aquatic vertebrates

<https://www.youtube.com/watch?v=HKwaWhrmmA>

<https://www.youtube.com/watch?v=wF0Xxy61cBI>



male

- Black & white barred above, pale below, red on neck/crown (male with more), robin-sized
- Wooded habitats
- Diet: Insects, seeds, fruits

Red-bellied Woodpecker

http://www.allaboutbirds.org/guide/Red-bellied_Woodpecker/id



female



male

https://www.youtube.com/watch?v=TUTJ5dA_rVg

- Small size, black & white above, males with red spot on neck
- Wooded habitats
- Diet: seeds, insects, fruits

Downy Woodpecker

http://www.allaboutbirds.org/guide/downy_Woodpecker/id



female



male

Northern Flicker

http://www.allaboutbirds.org/guide/Northern_Flicker/id

female



male



- Yellow underside of wings, brownish and barred above red nape, robin-sized
- Open woods, forest edge, often on ground
- Mostly insects, ants, seeds, some fruit



Pileated Woodpecker

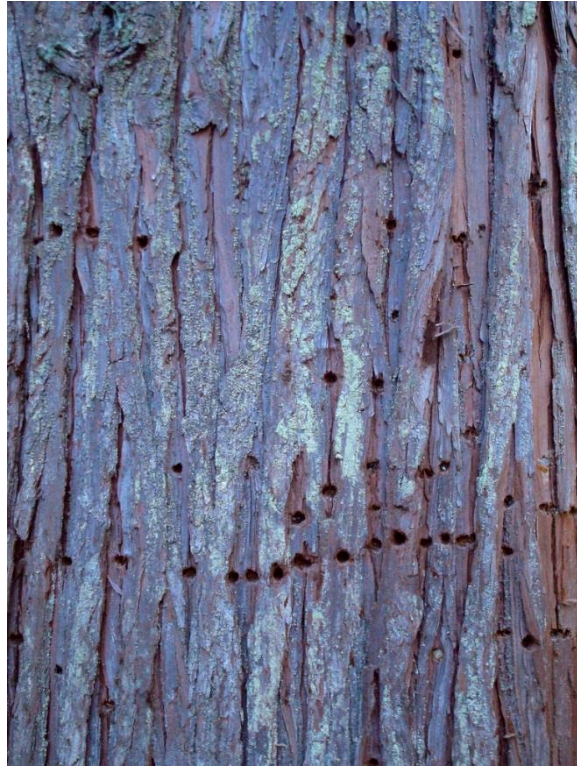
http://www.allaboutbirds.org/guide/Pileated_woodpecker/id

- Black bodied, red crest on head, large (crow-sized)
- Forested habitats
- Mostly wood-boring insects; also fruits, seeds





female



Yellow-bellied Sapsucker

[http://www.allaboutbirds.org/guide/Yellow-bellied Sapsucker/id](http://www.allaboutbirds.org/guide/Yellow-bellied_Sapsucker/id)

- Black & white above, pale below, black on chest, white wing stripe, red crown, males with red throat
- Wooded habitats
- Mostly tree sap and small insects (drills a row of holes in tree trunk)



male



Red-eyed Vireo

http://www.allaboutbirds.org/guide/Red-eyed_Vireo/id

- Small songbird, olive green above, pale below, gray crown, slight 'hook' to bill
- Wooded habitats
- Diet: insects, small fruits





Blue Jay

http://www.allaboutbirds.org/guide/blue_jay/id

- Large songbird, various shades of blue above, crested head, pale below with black collar
- Uses a diversity of wooded habitats
- Mostly insects, seeds, nuts (esp. acorns) – watch for caching behavior!!





American Crow

http://www.allaboutbirds.org/guide/american_crow/id



- Solid black, slight iridescence
- Diverse array of open habitats
- Diet: Generalist, insects, seeds, fruit, small vertebrates, bird eggs and young.
- Social: communal rooster, mobbing behavior

Black-capped Chickadee

http://www.allaboutbirds.org/guide/Black-capped_Chickadee/id



- Black throat and cap, gray above, pale below, small size.
- Wooded habitats, forest edge; often at bird feeders
- Diet: small insects, seeds, fruits
- Very social, occurs in groups, mixed-species flocks, mobbing behavior!



Tufted Titmouse

http://www.allaboutbirds.org/guide/tufted_titmouse/id

- Gray above, with crest on head, rusty sides,
- Wooded habitats, forest edge ; often at bird feeders
- Diet: small insects, seeds, fruits
- Very social, occurs in groups, mixed-species flocks, mobbing behavior!

