

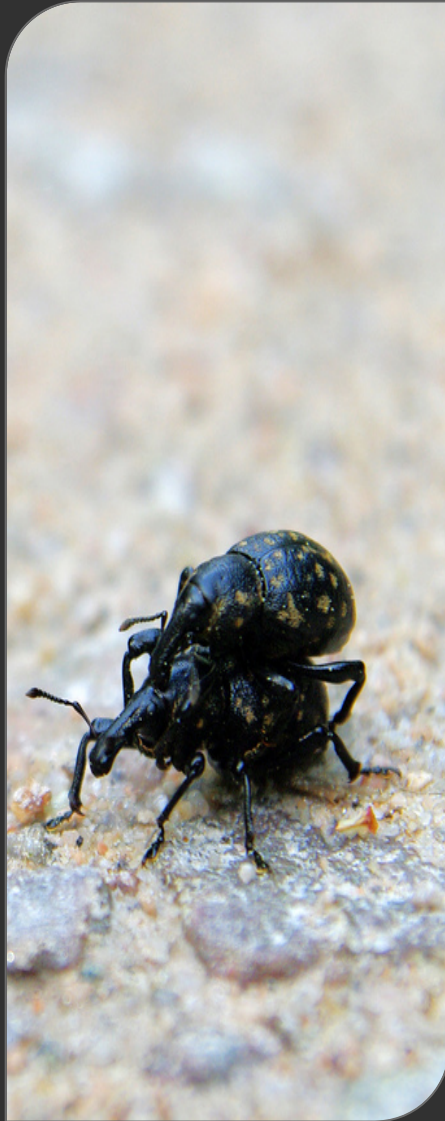
# THE INSECTS

**HEATHER GRAB [Y]**  
**CU ENTOMOLOGY**

Insects are everywhere...



Insects are everywhere...



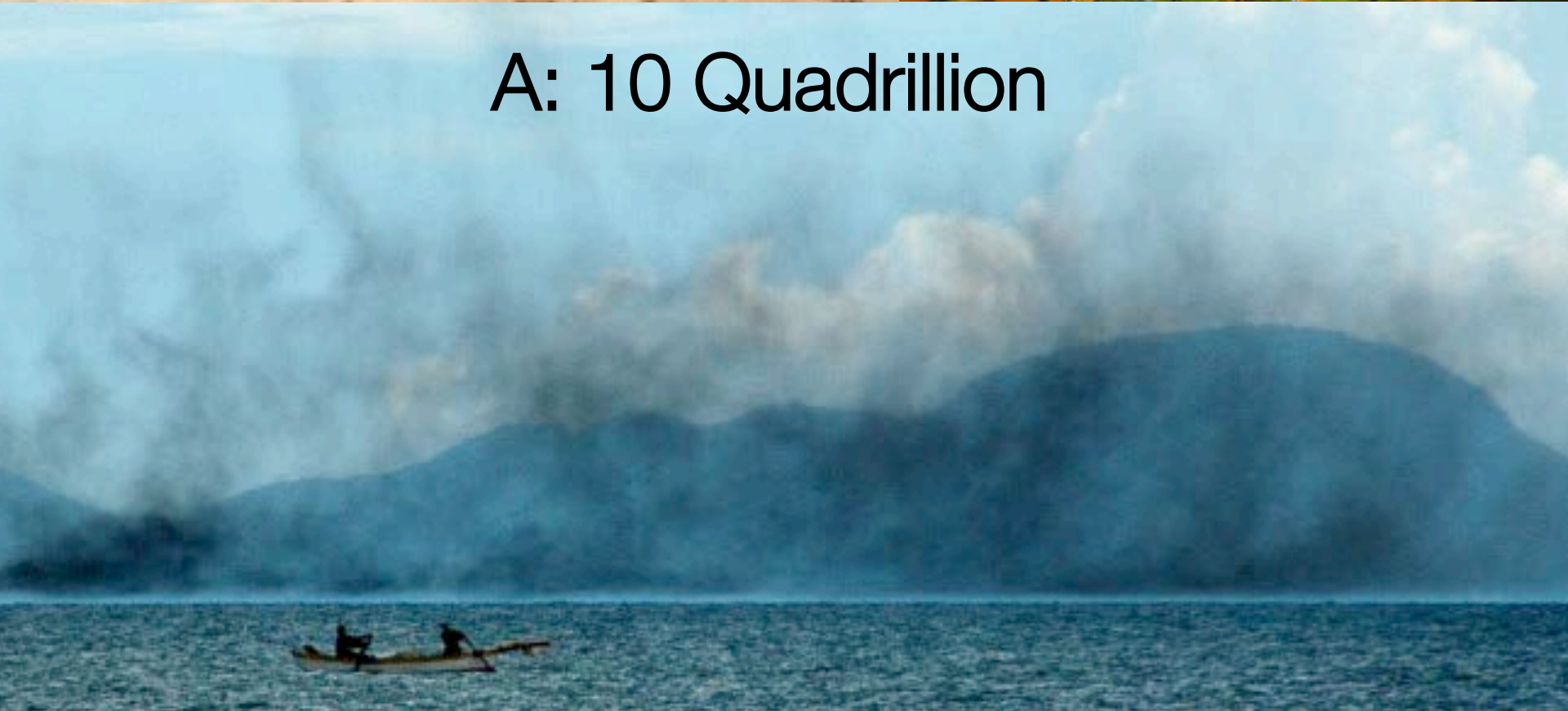




Q: How many individual insects are there on earth?

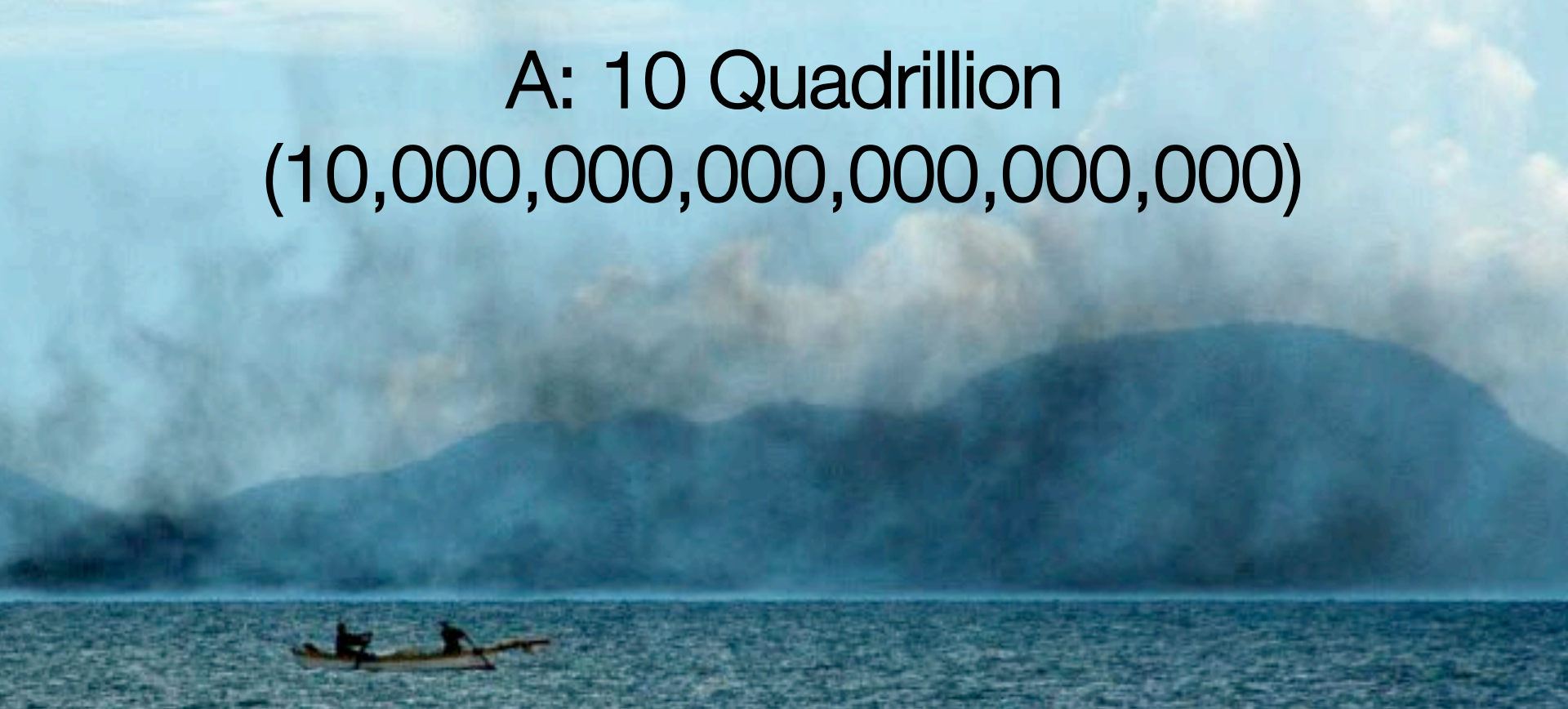


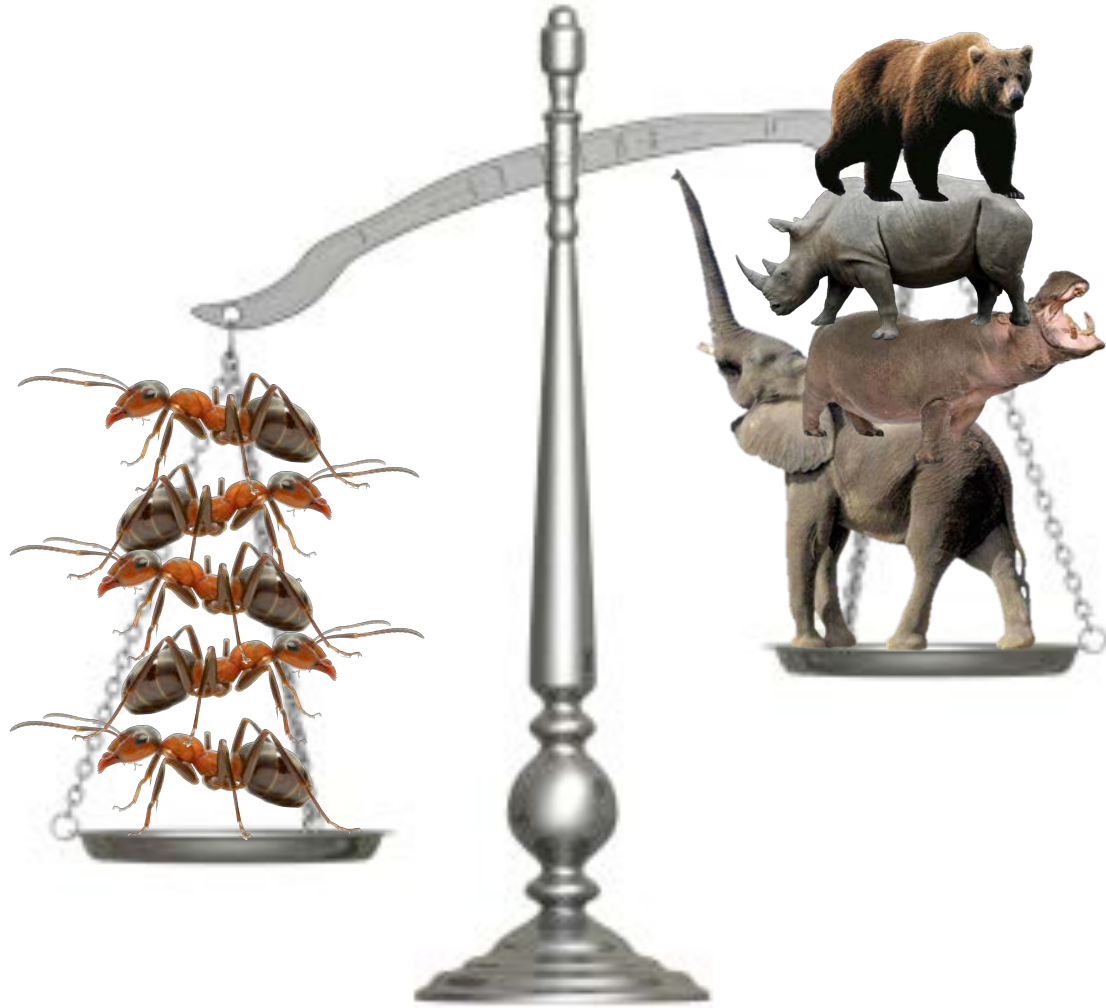
A: 10 Quadrillion



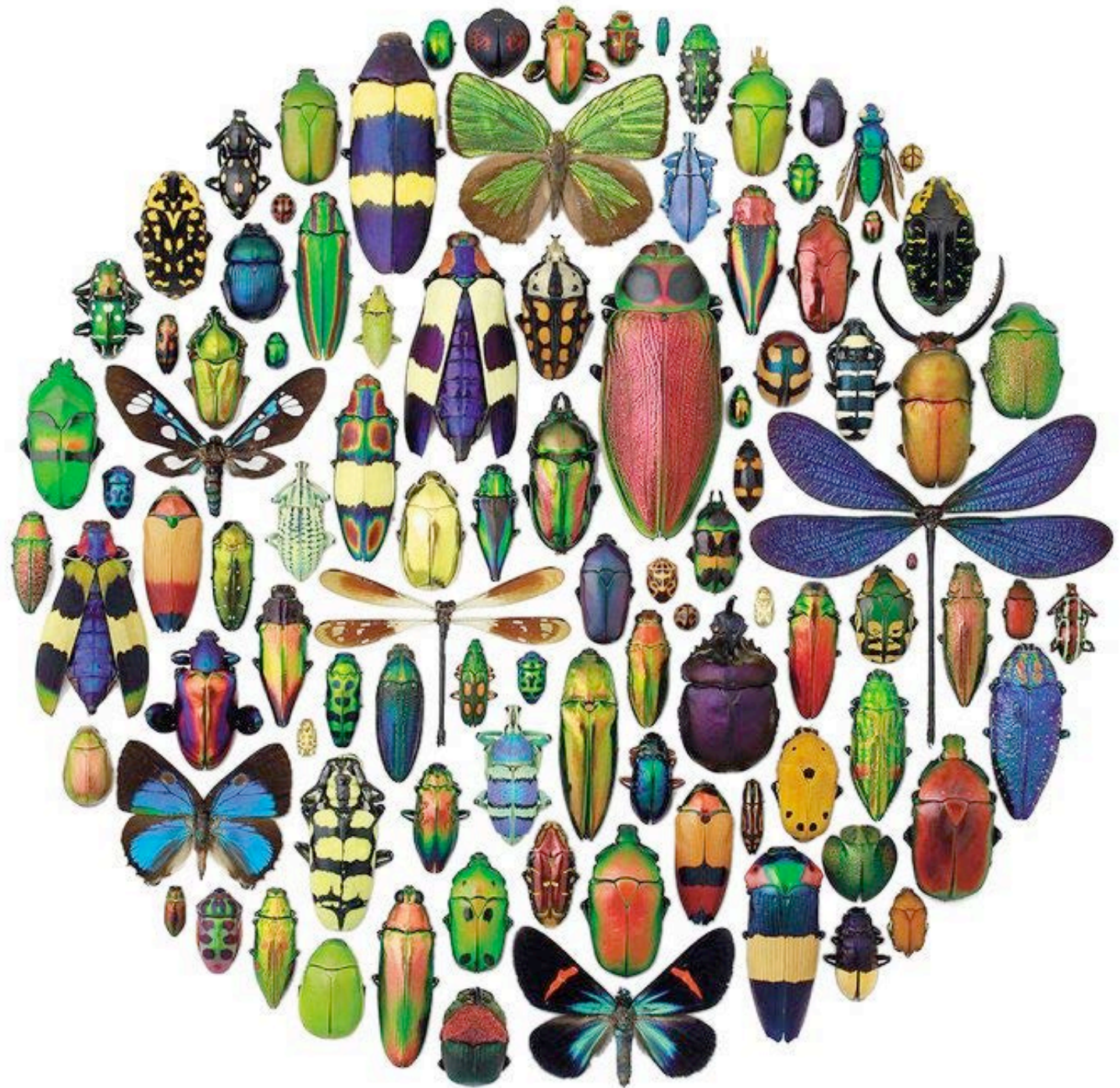


A: 10 Quadrillion  
(10,000,000,000,000,000)











Number of Species

20K-

10K-

5K -



Bees

Birds

Reptiles

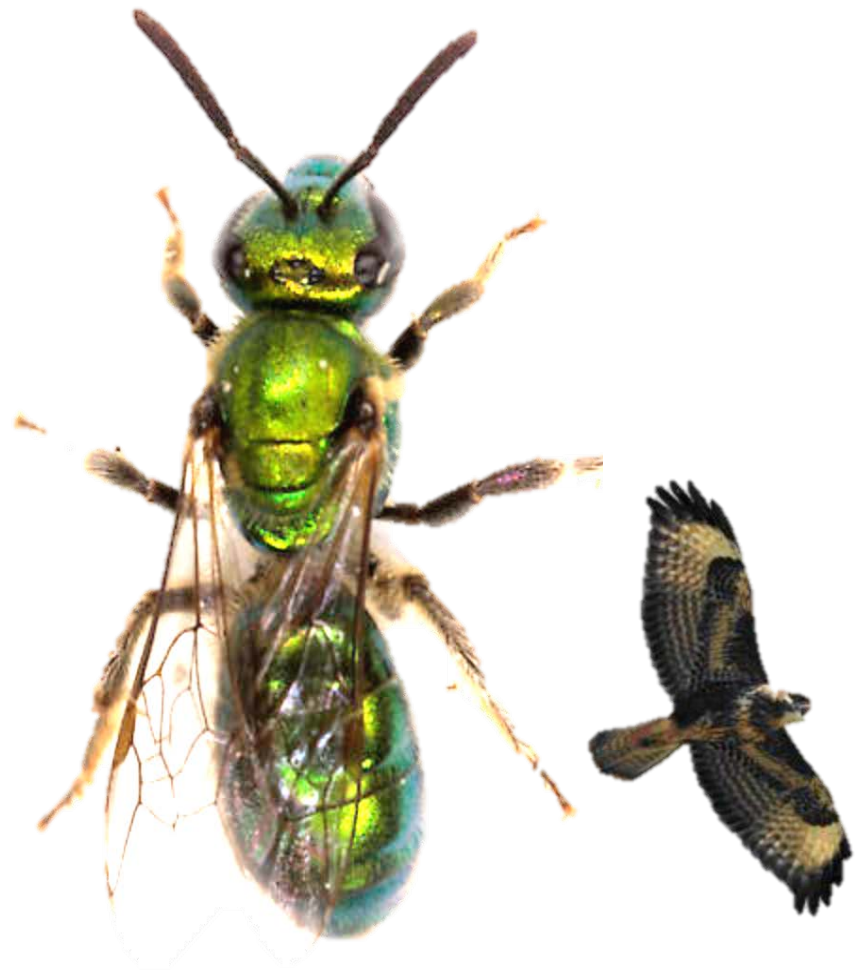
Mammals

Number of Species

20K-

10K-

5K -



Bees

Birds

Reptiles

Mammals

Number of Species

20K-

10K-

5K -



Bees

Birds

Reptiles

Mammals



Number of Species

20K-

10K-

5K -



Bees

Birds

Reptiles

Mammals







*A.*



*b.*

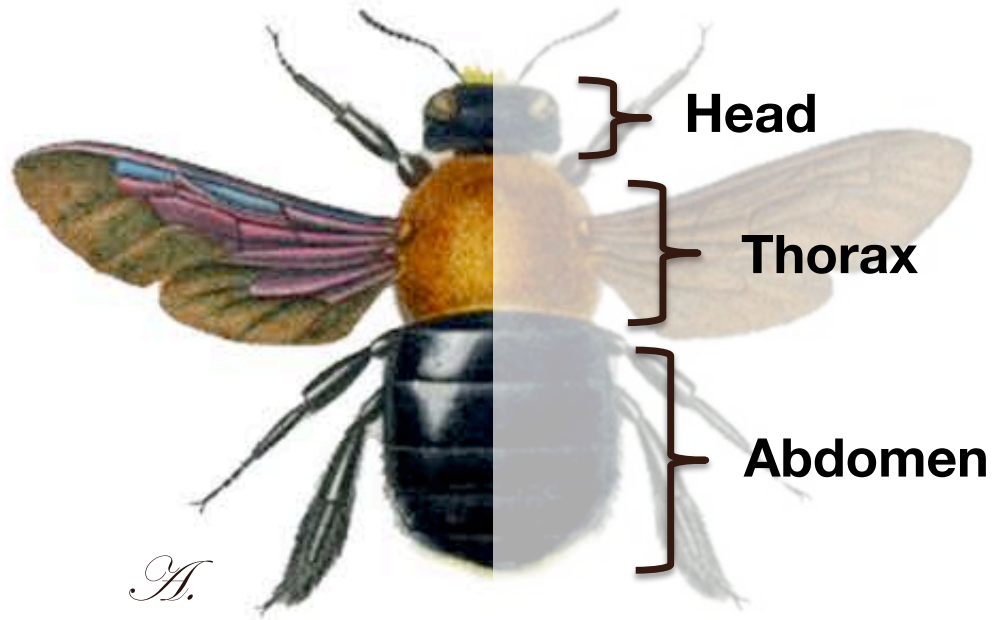


*c.*

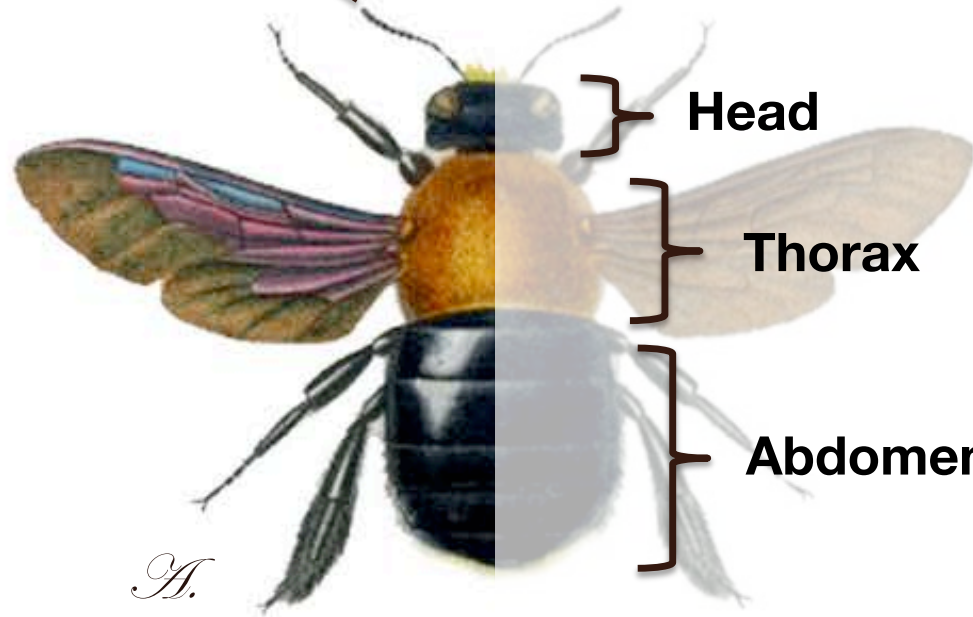


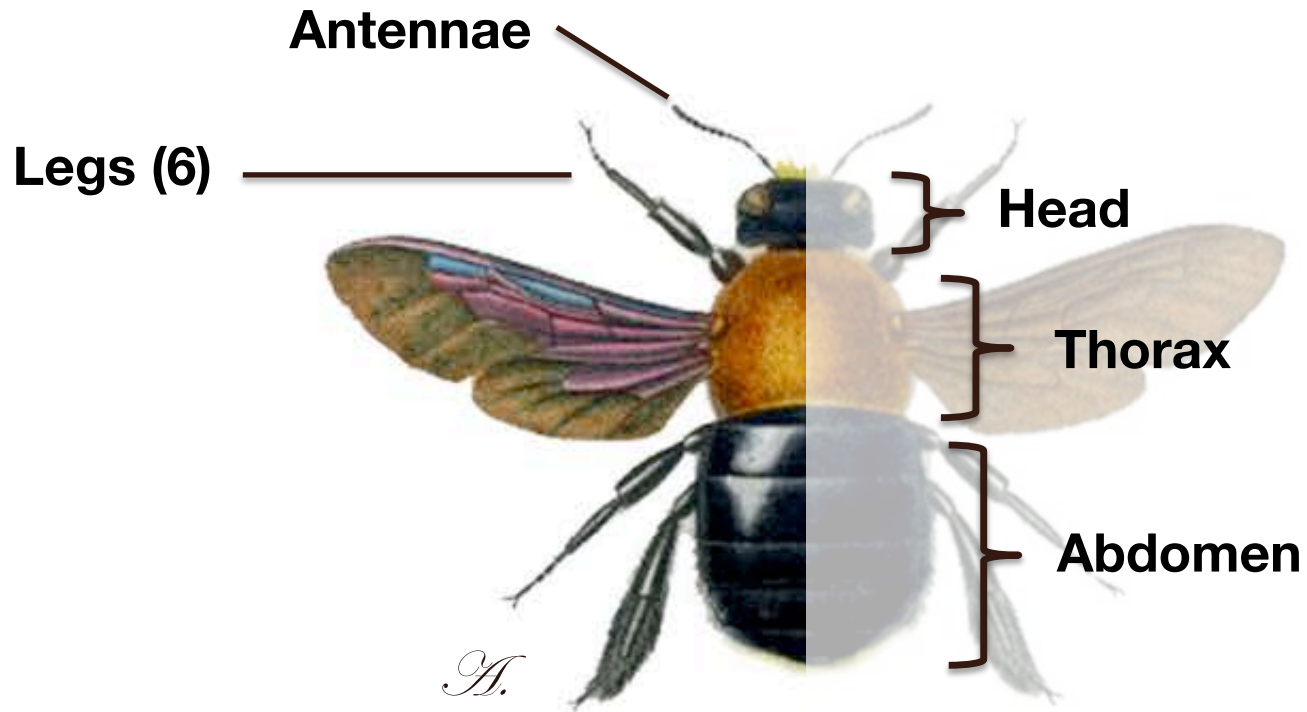
*d.*

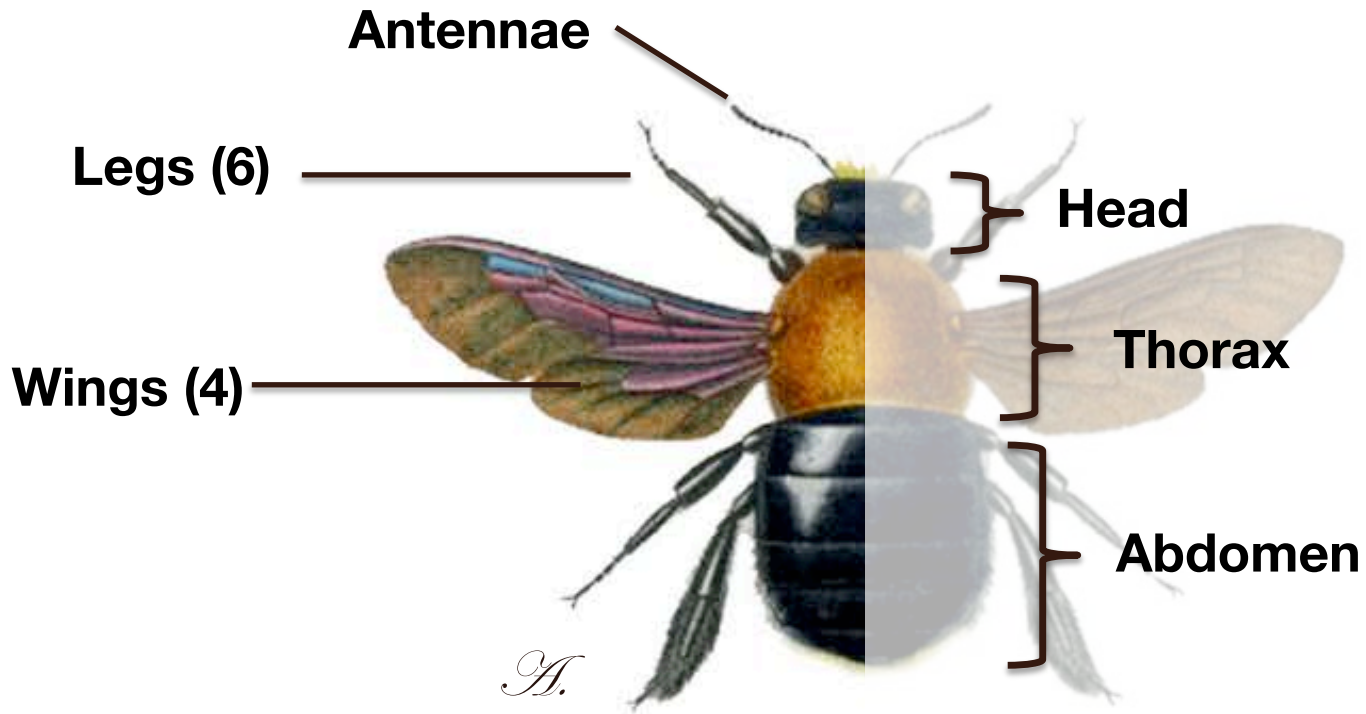


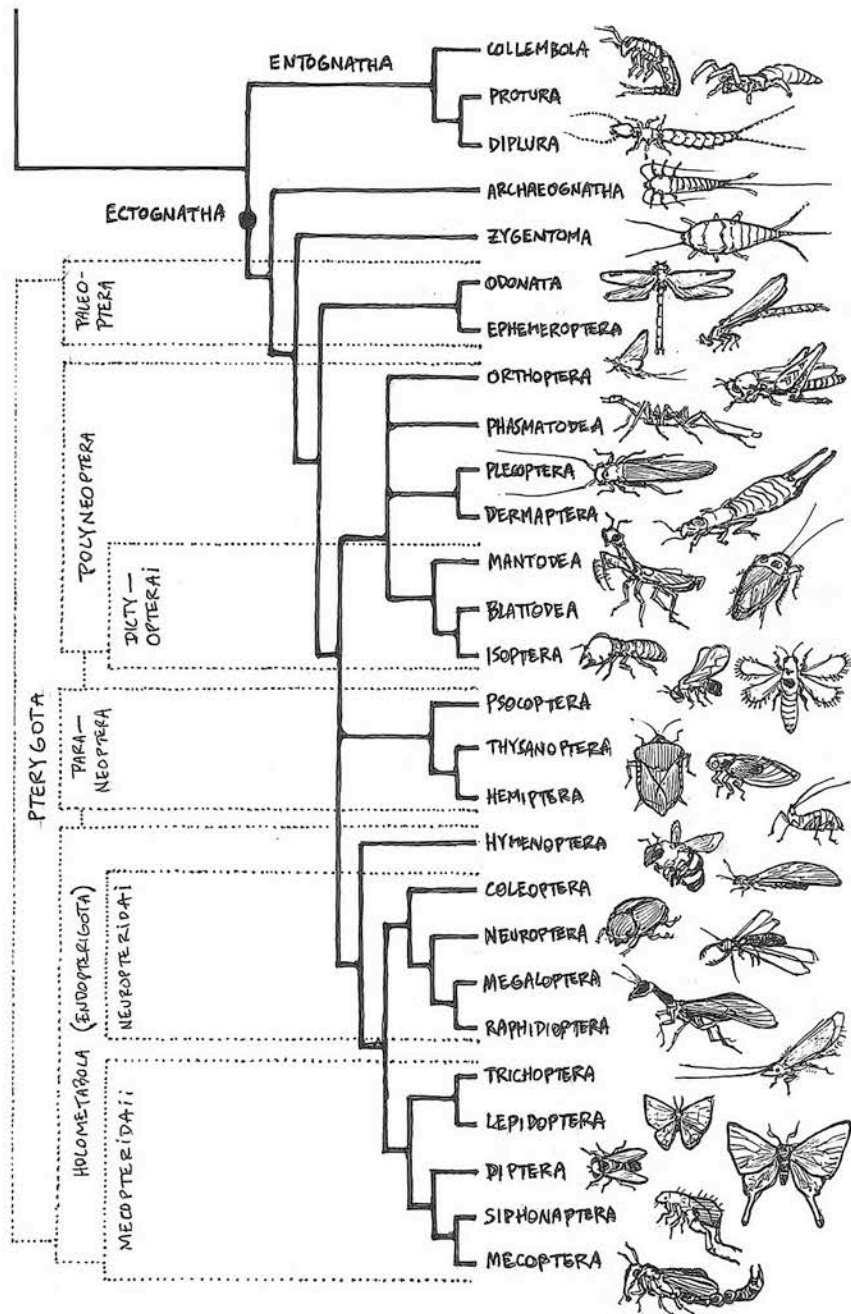


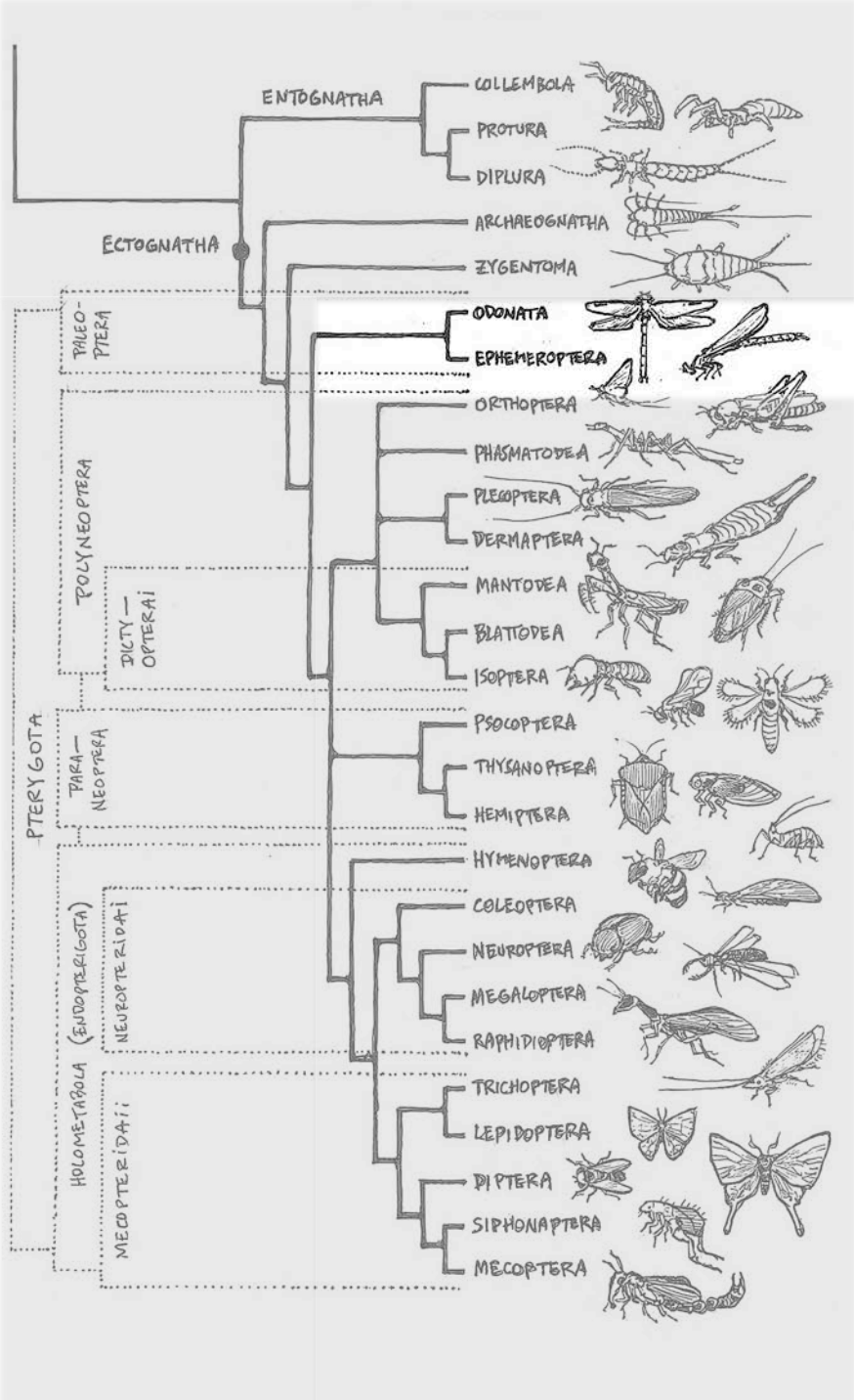
**Antennae**

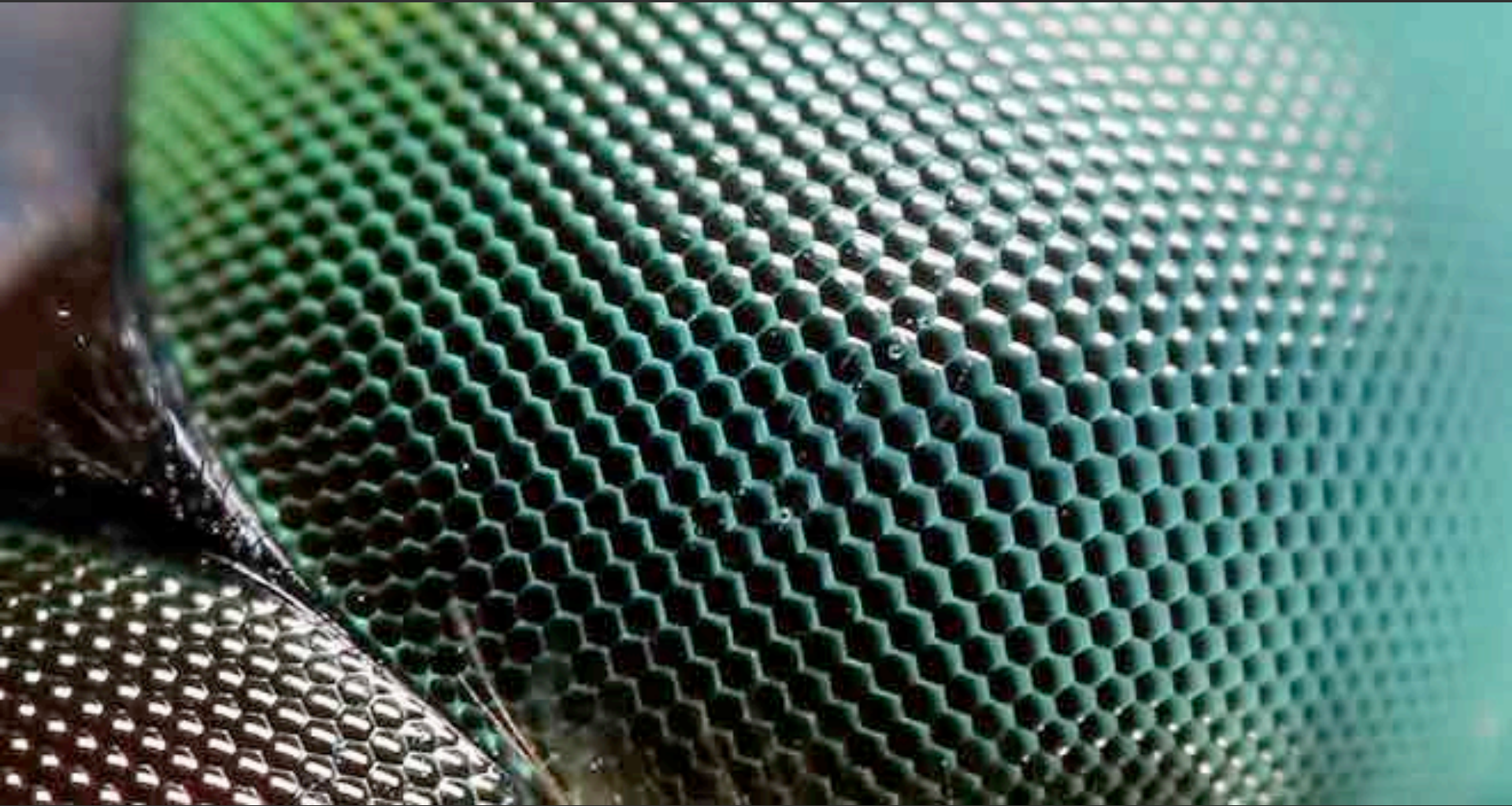






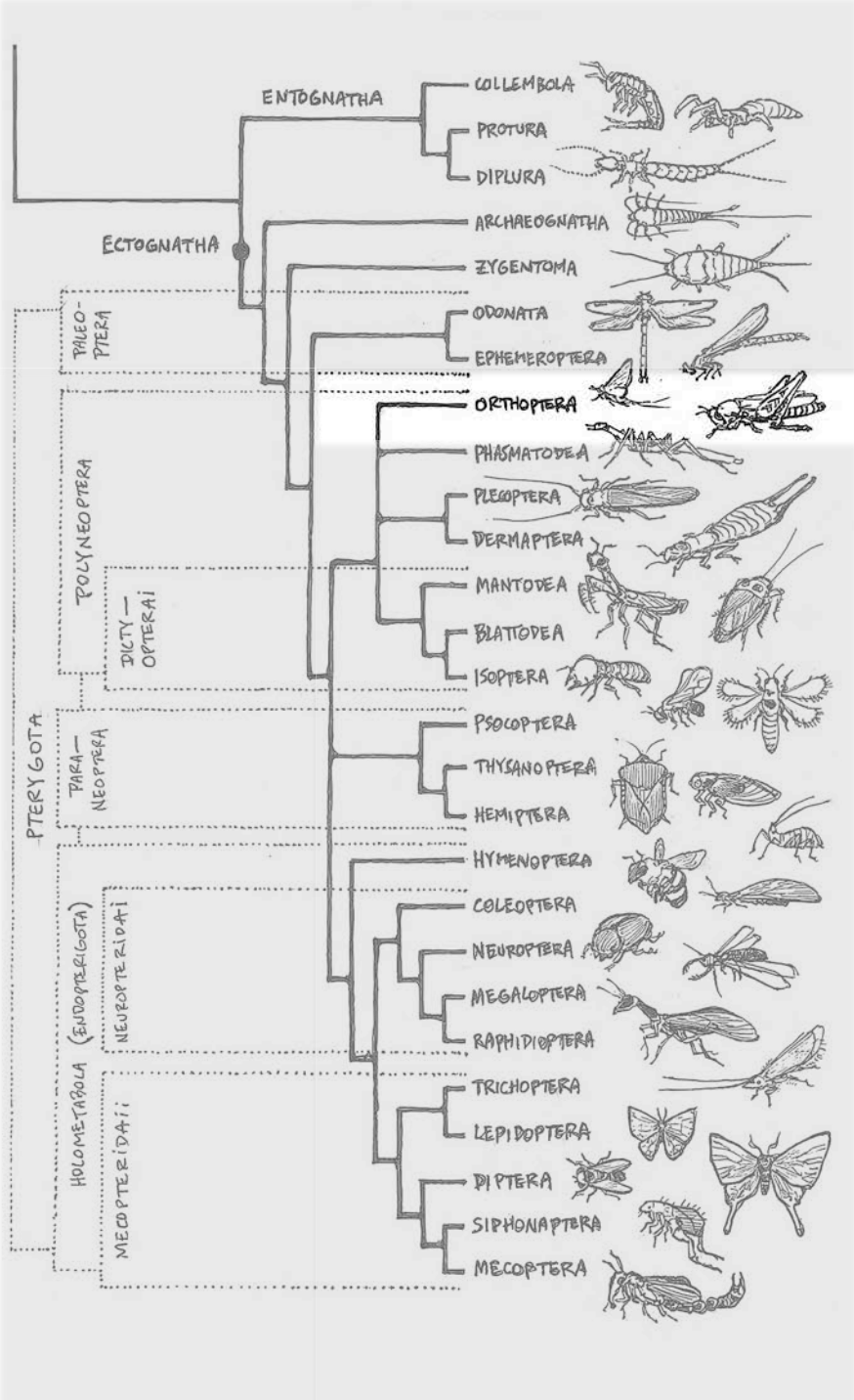


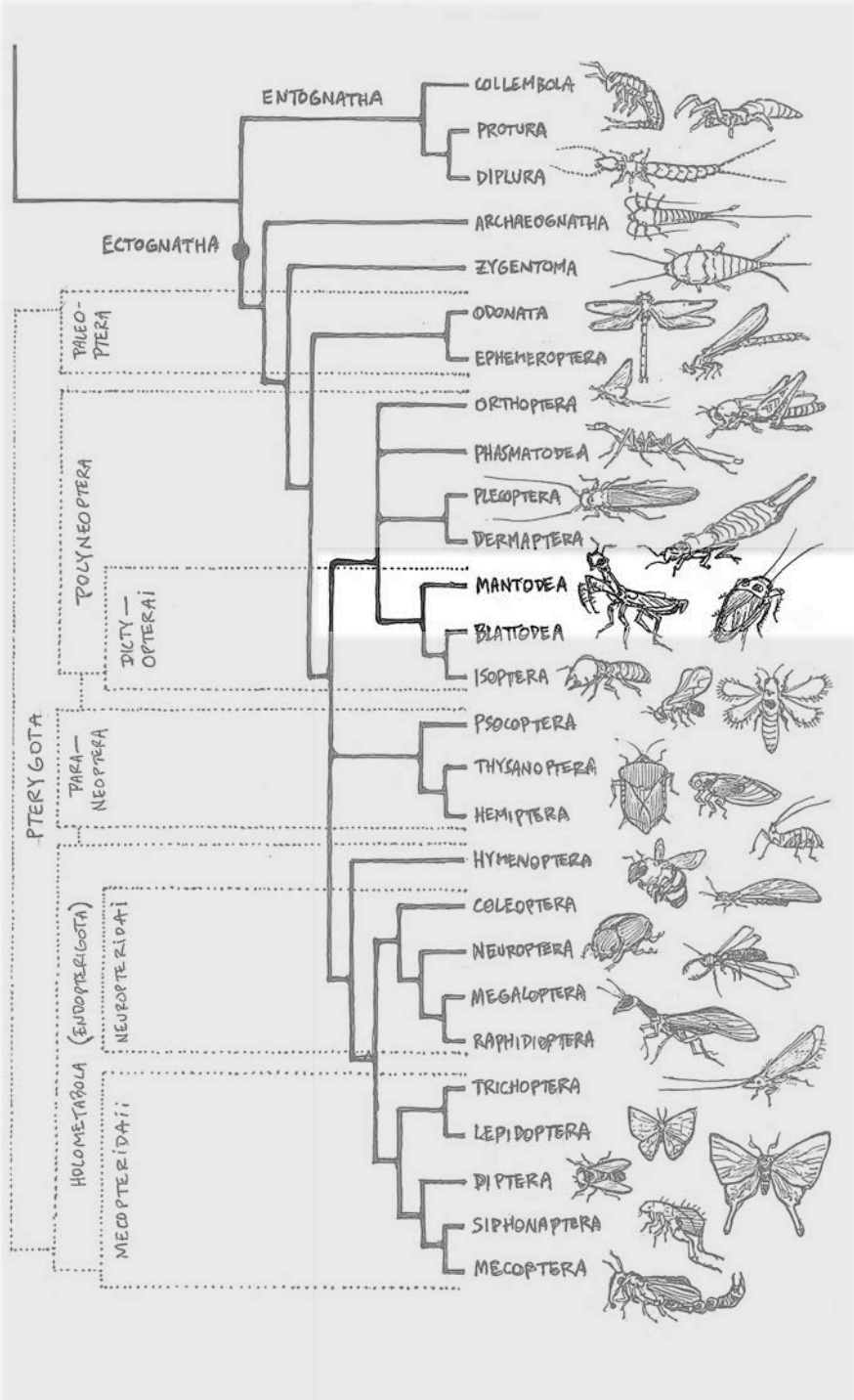


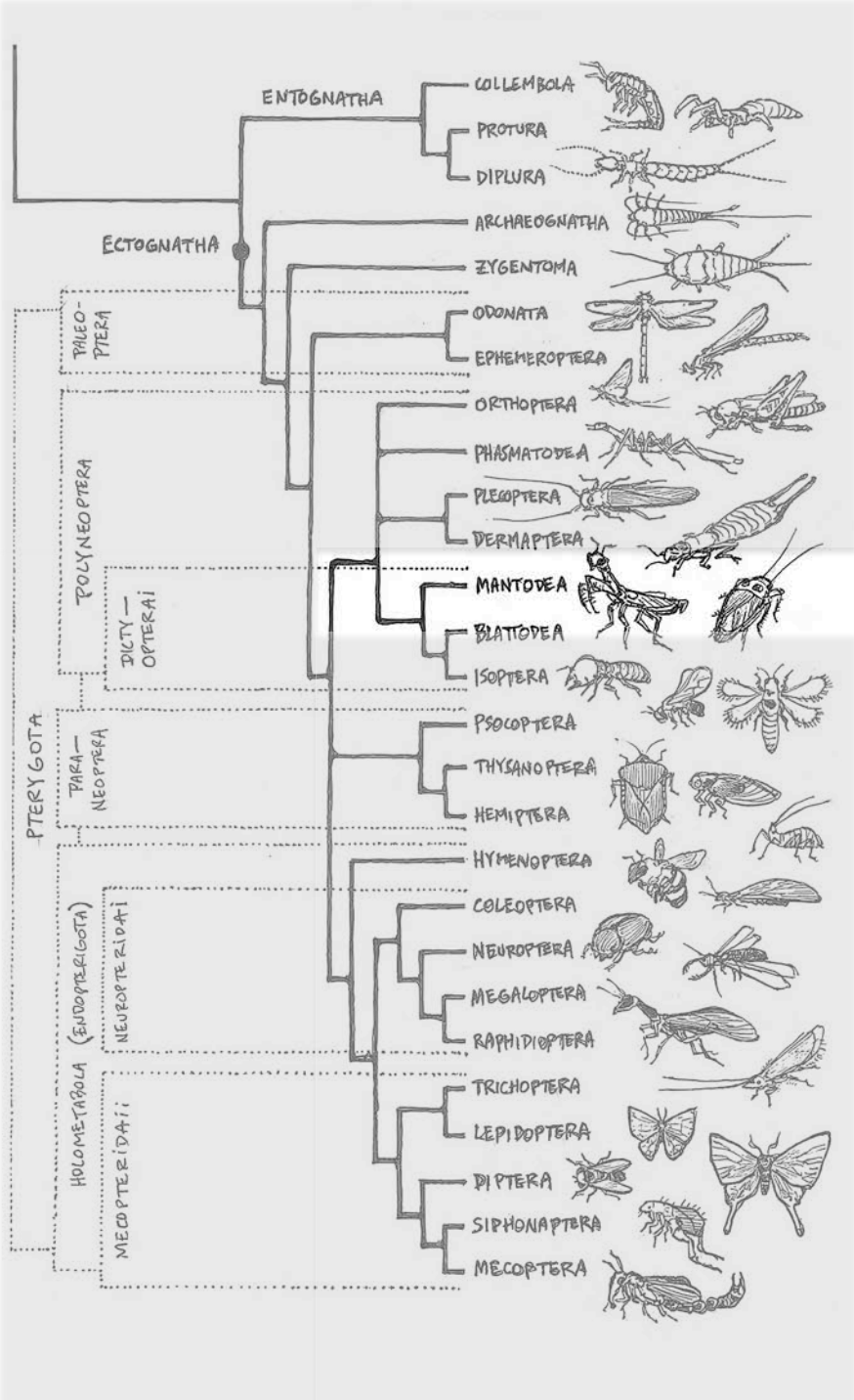




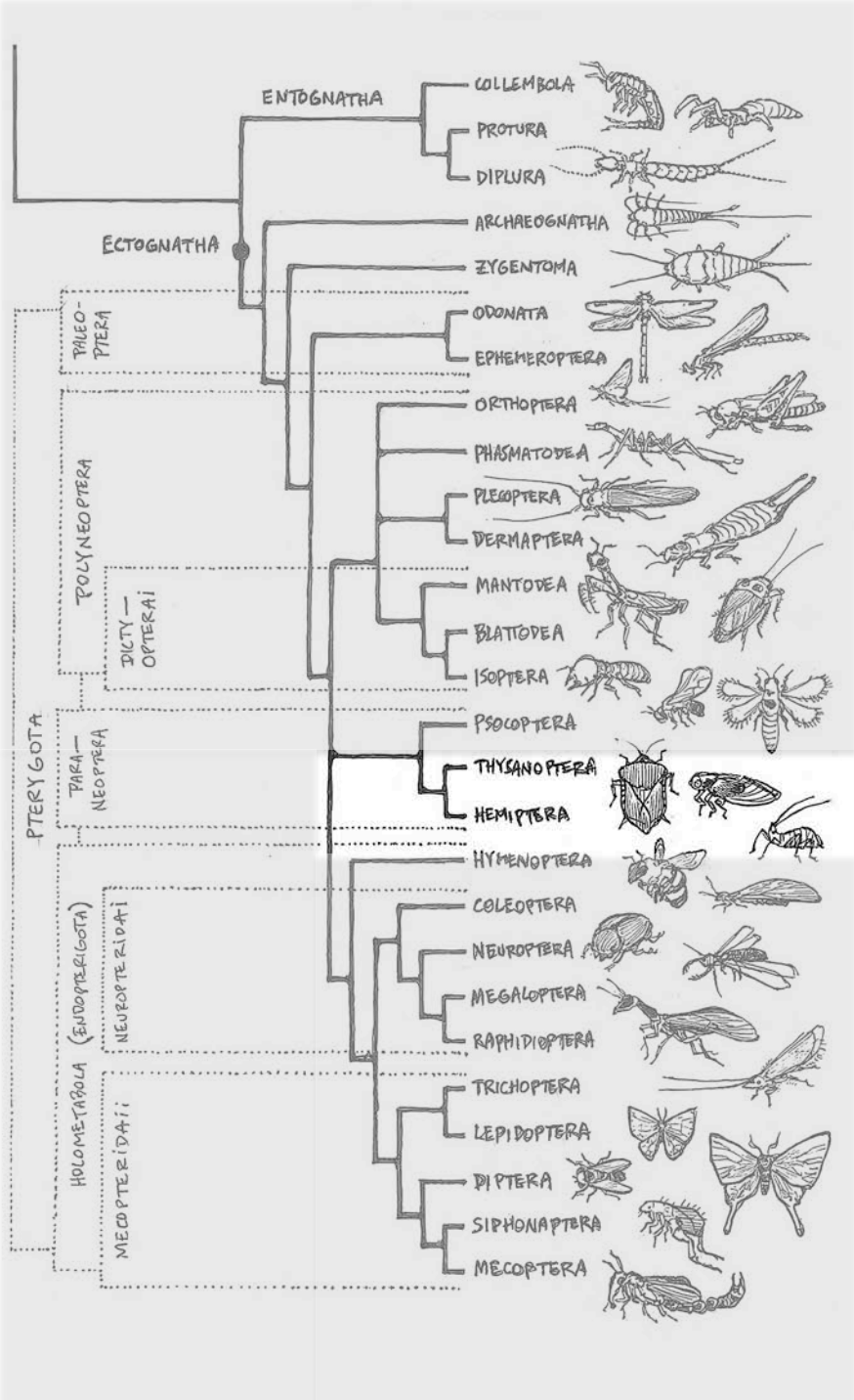






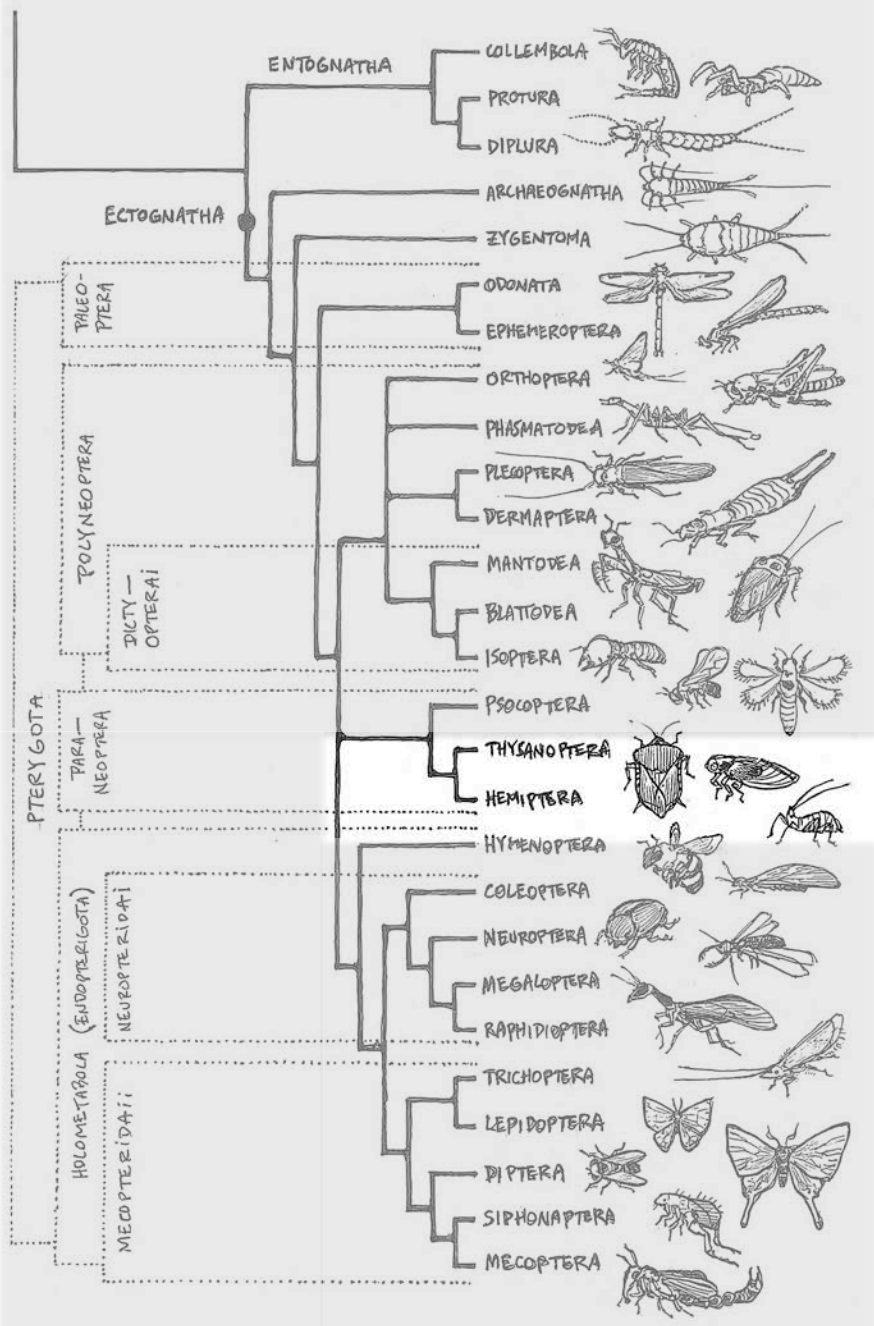


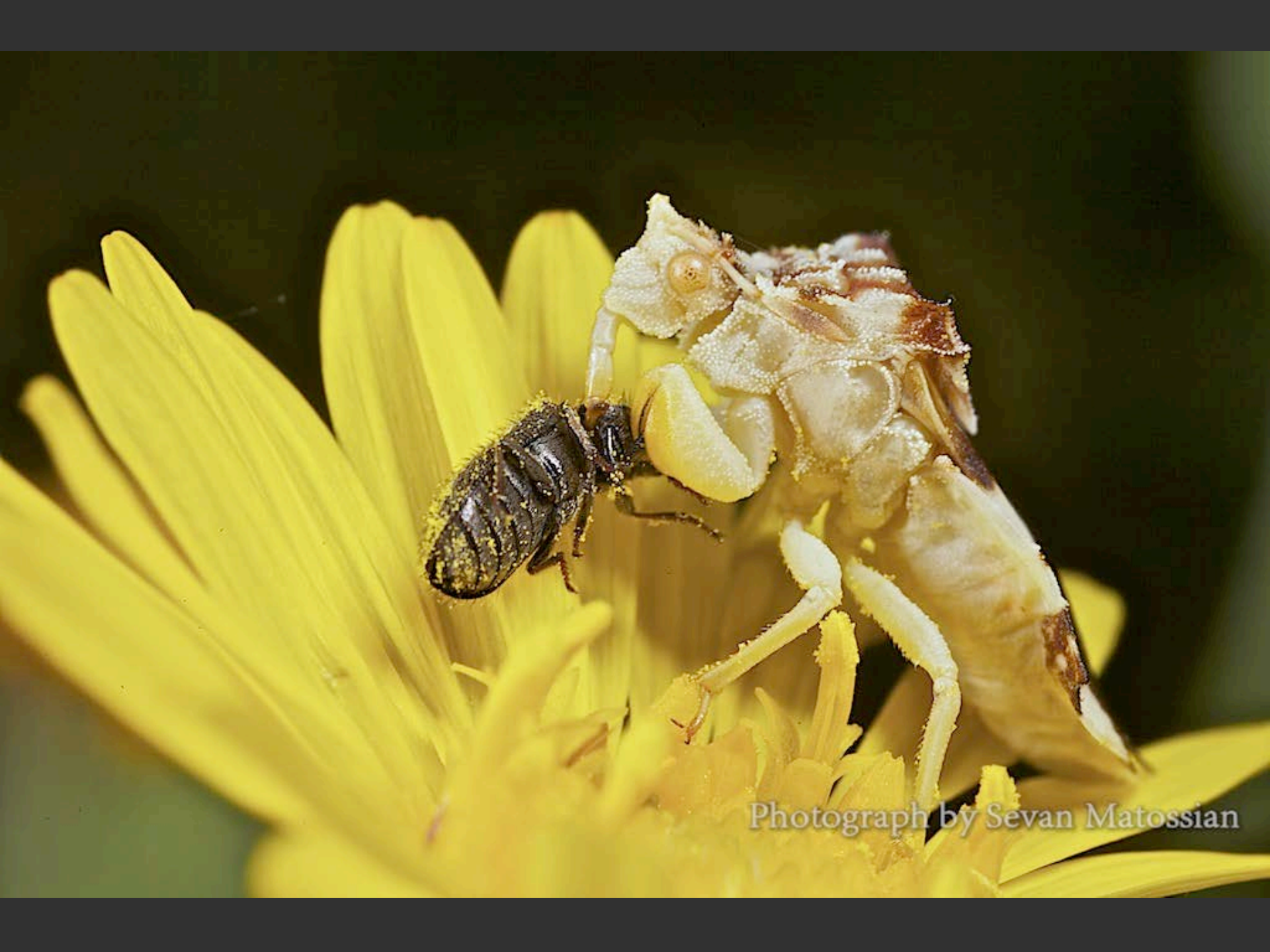




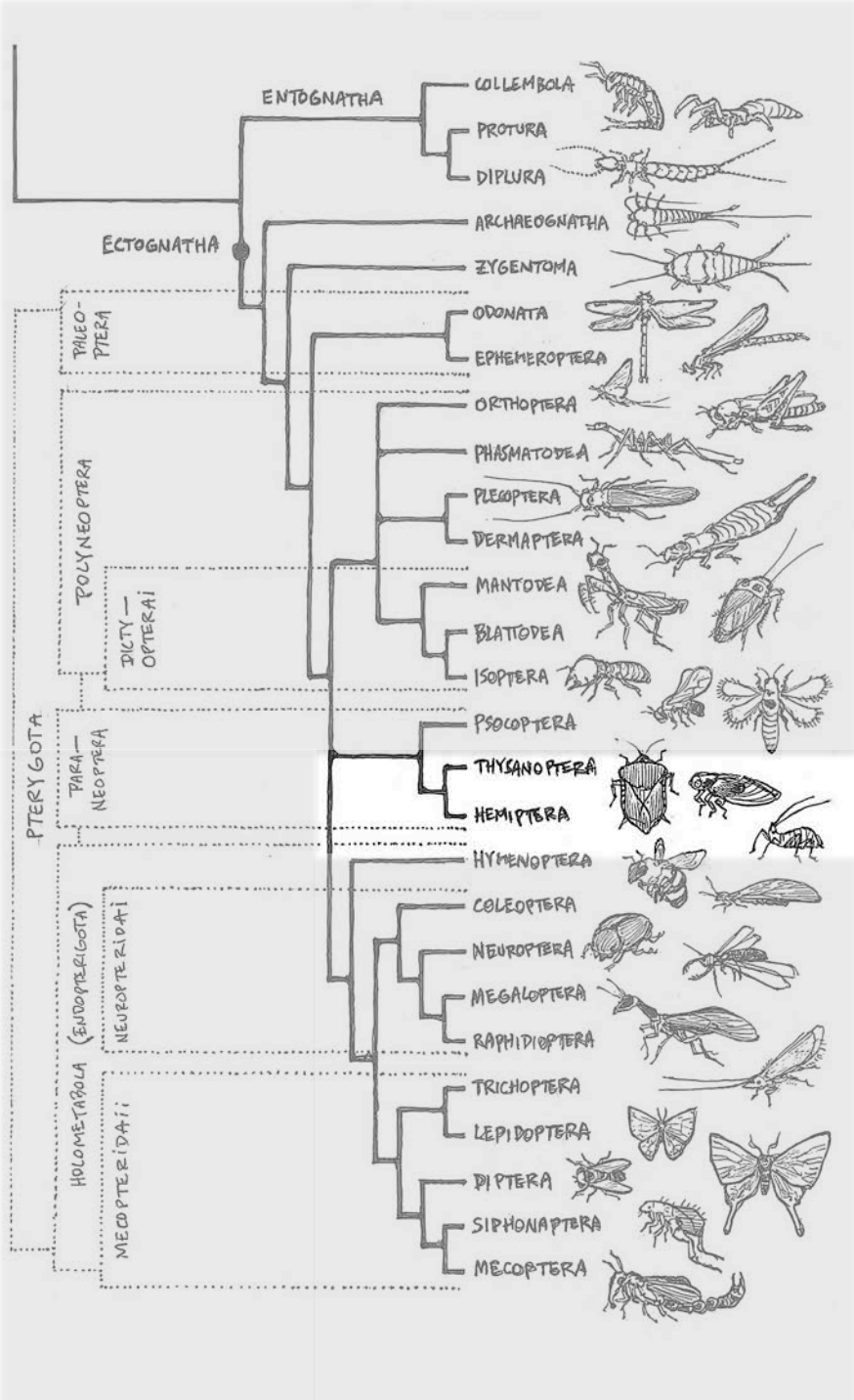
© R.J.Hay 2006



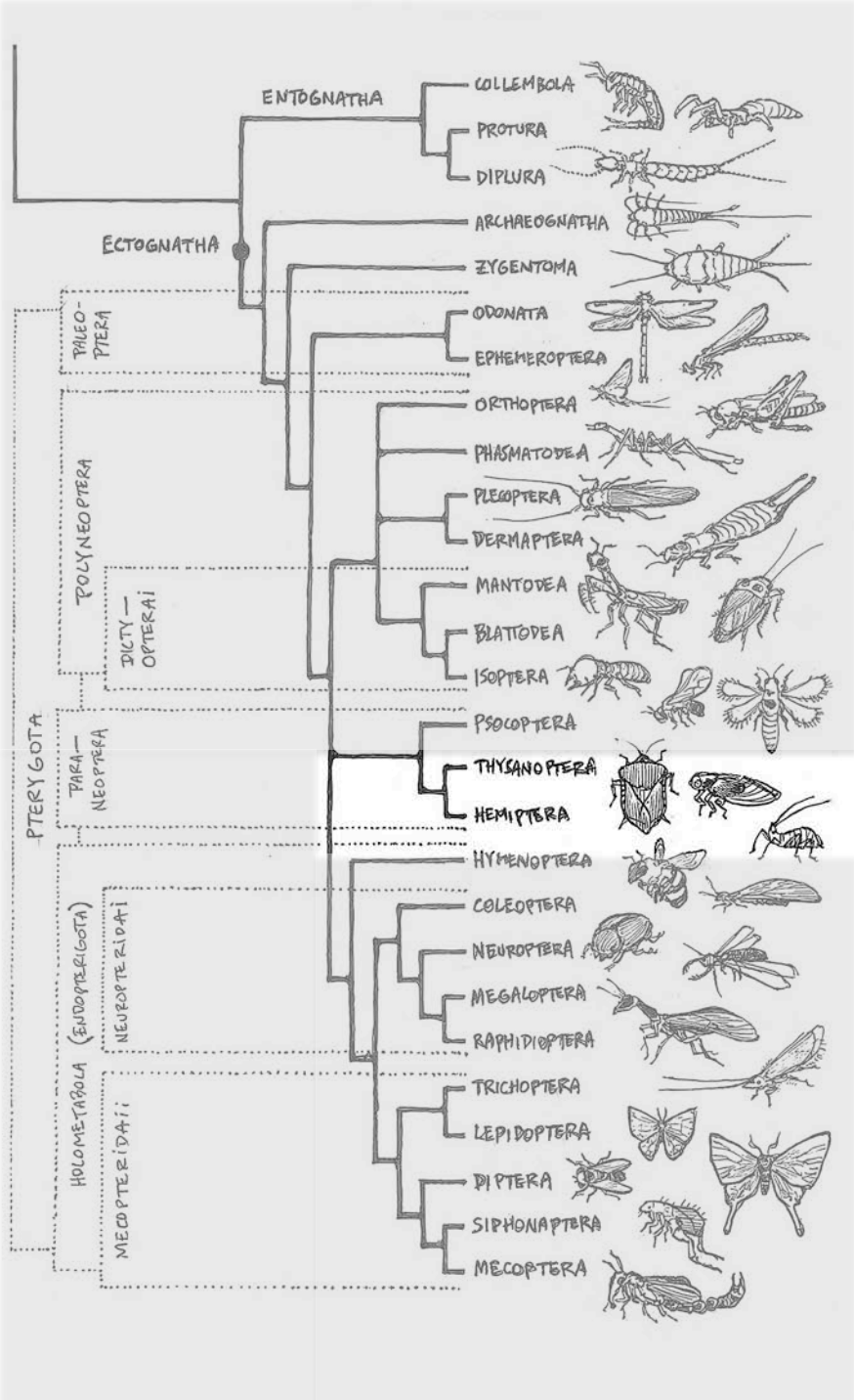


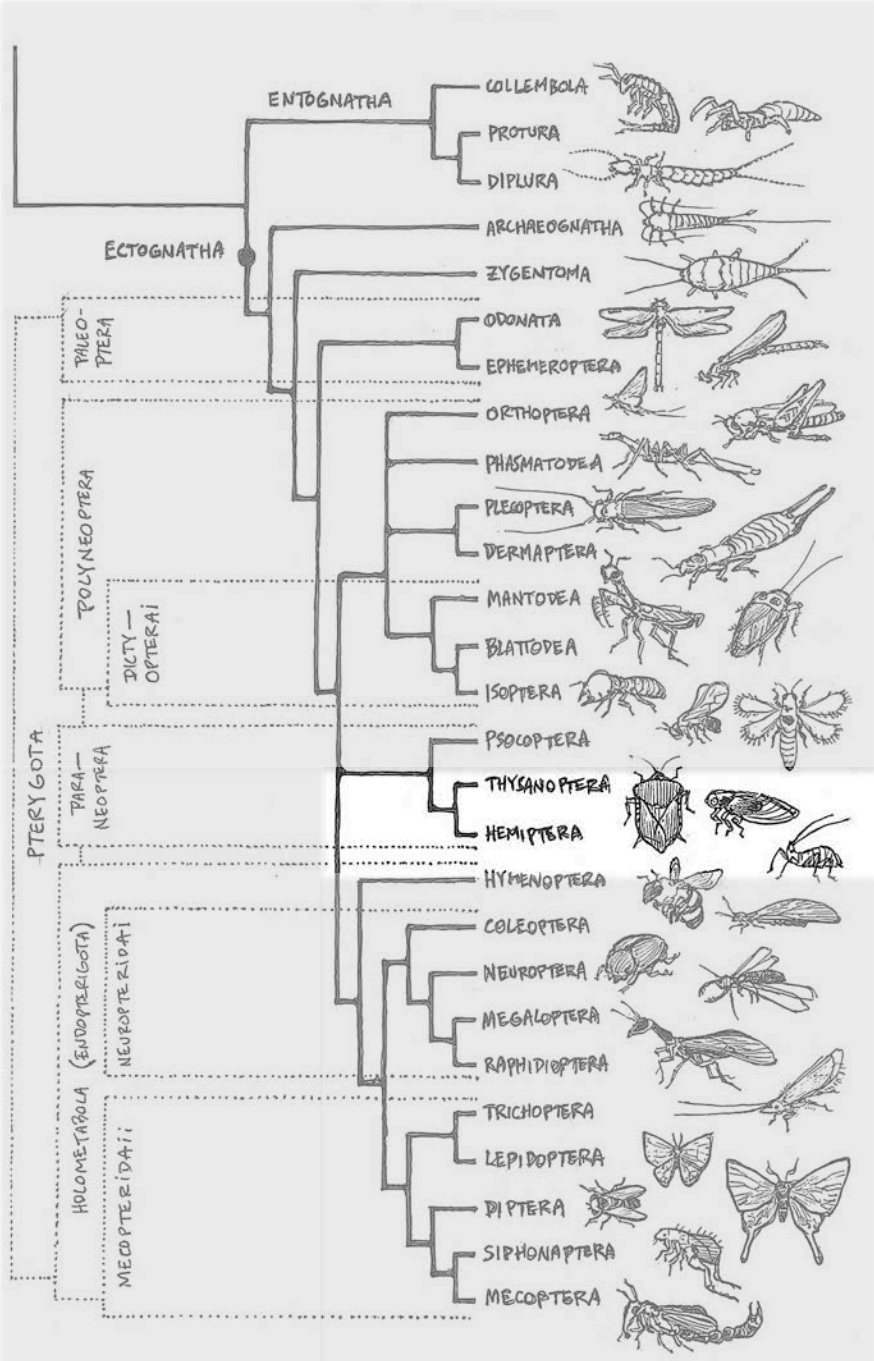


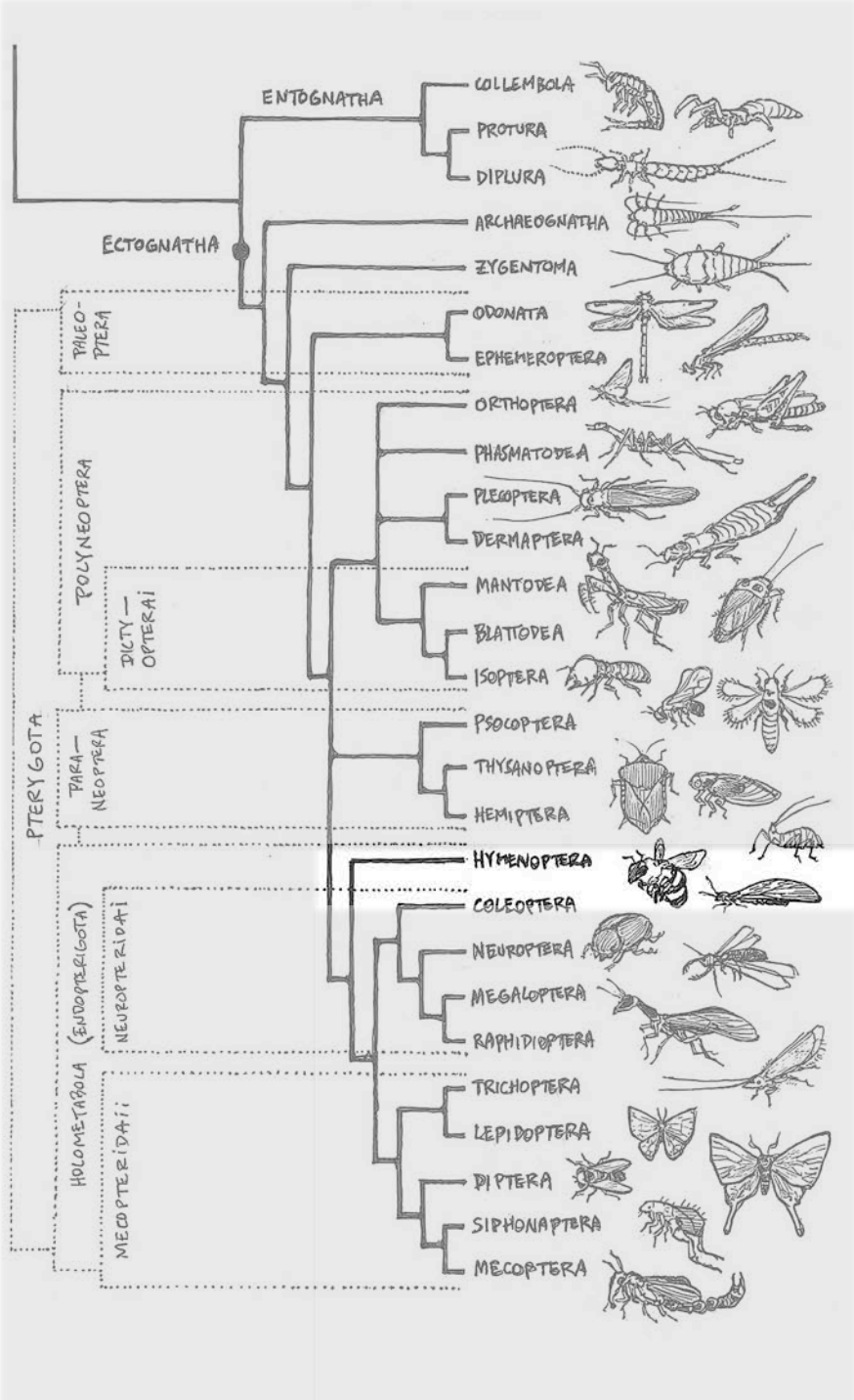
Photograph by Sevan Matossian

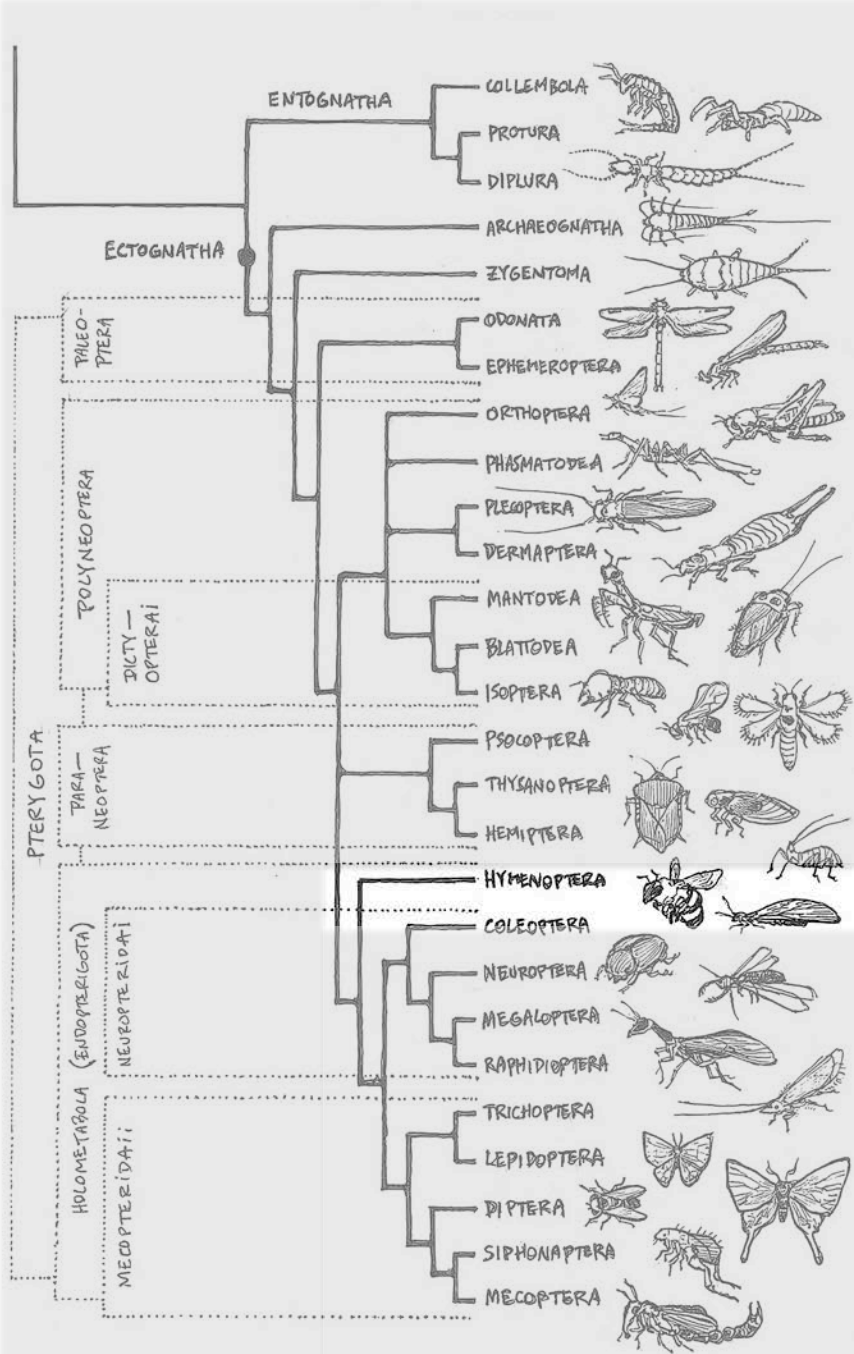


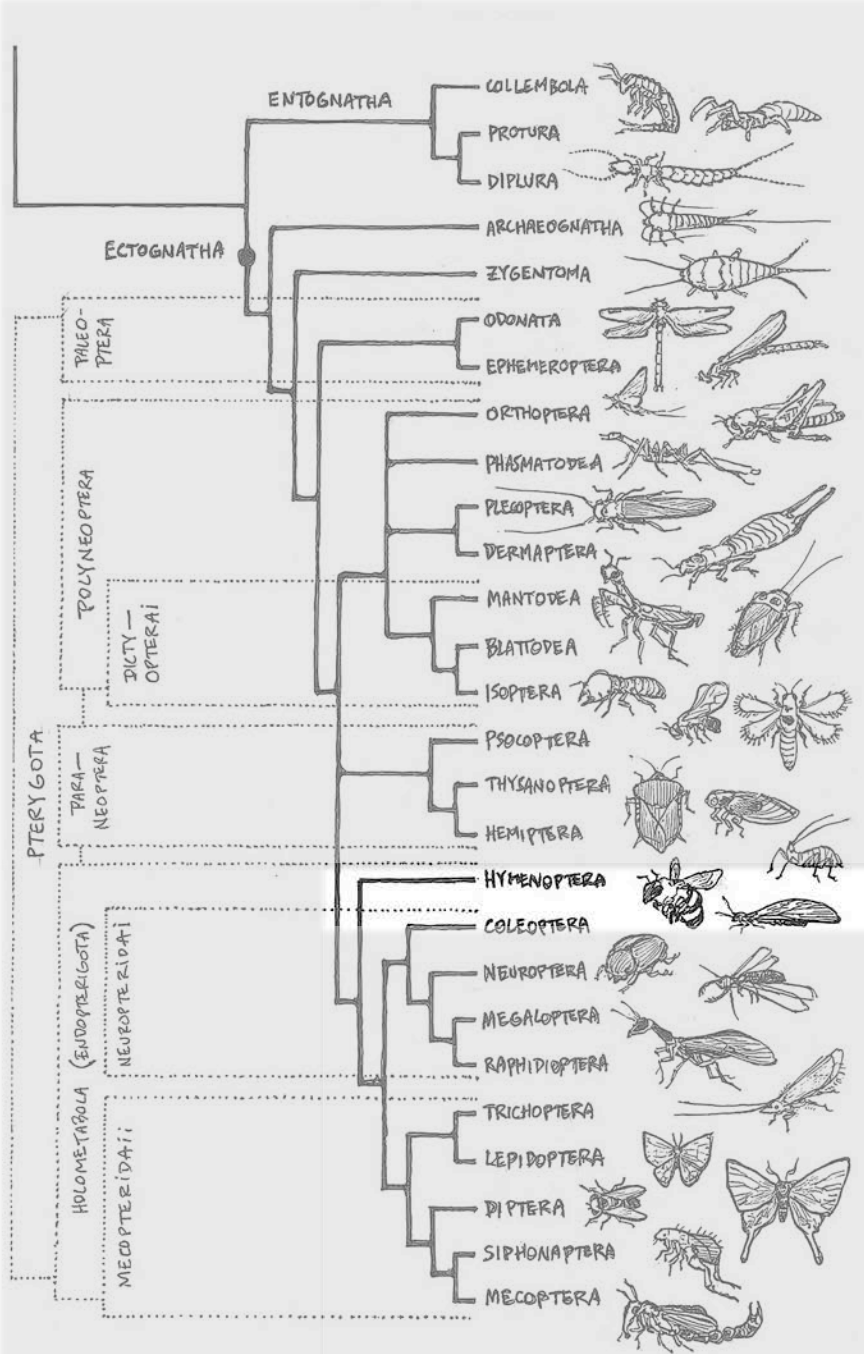




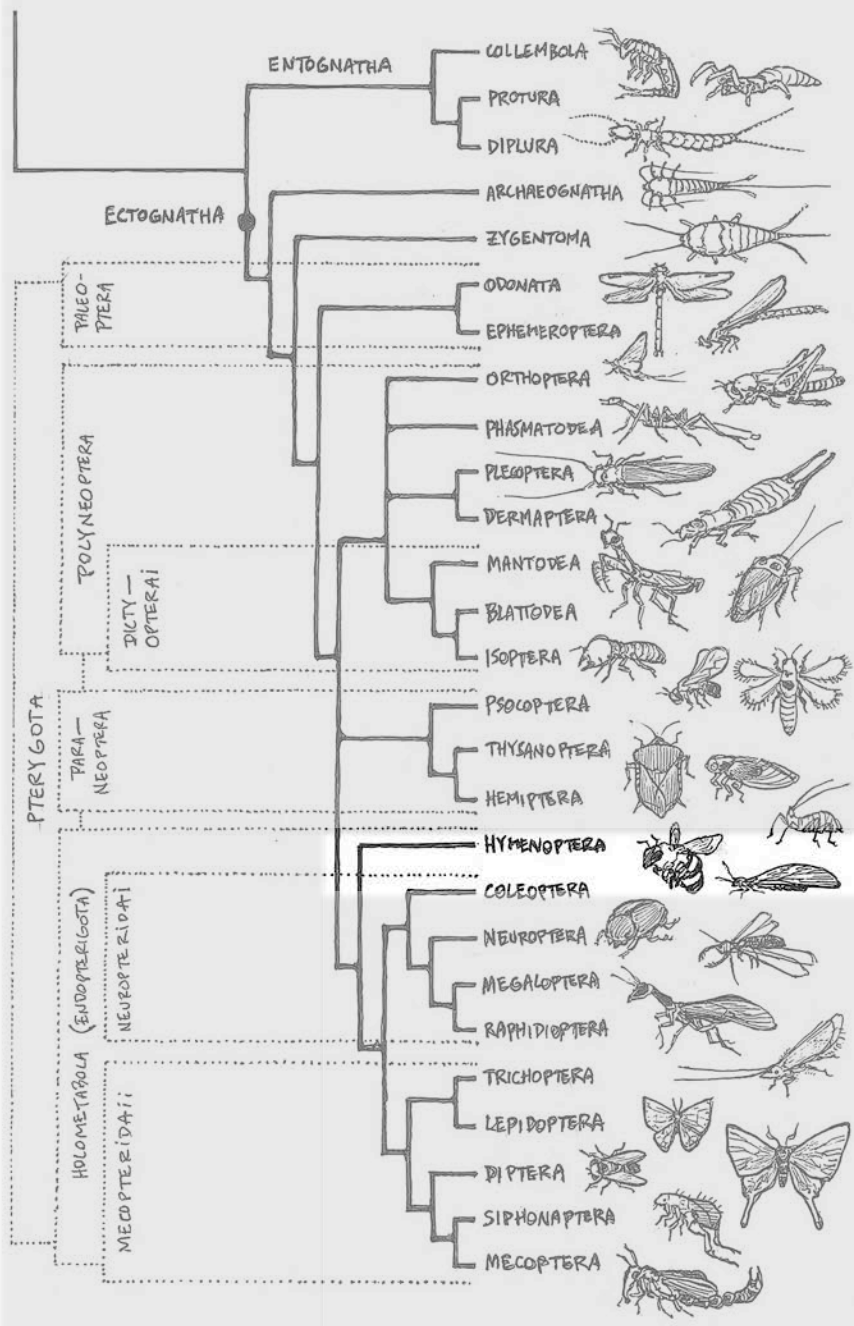


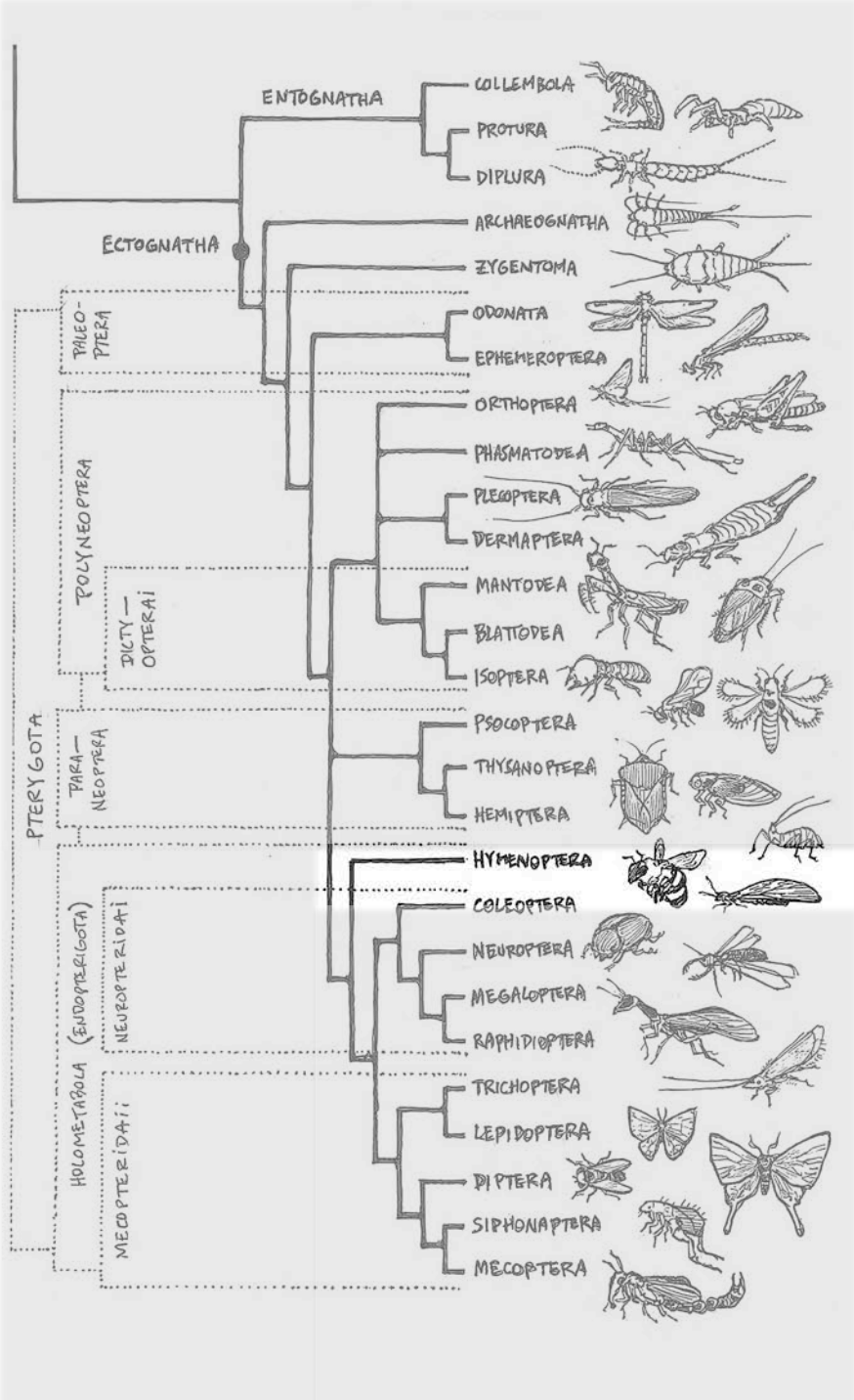




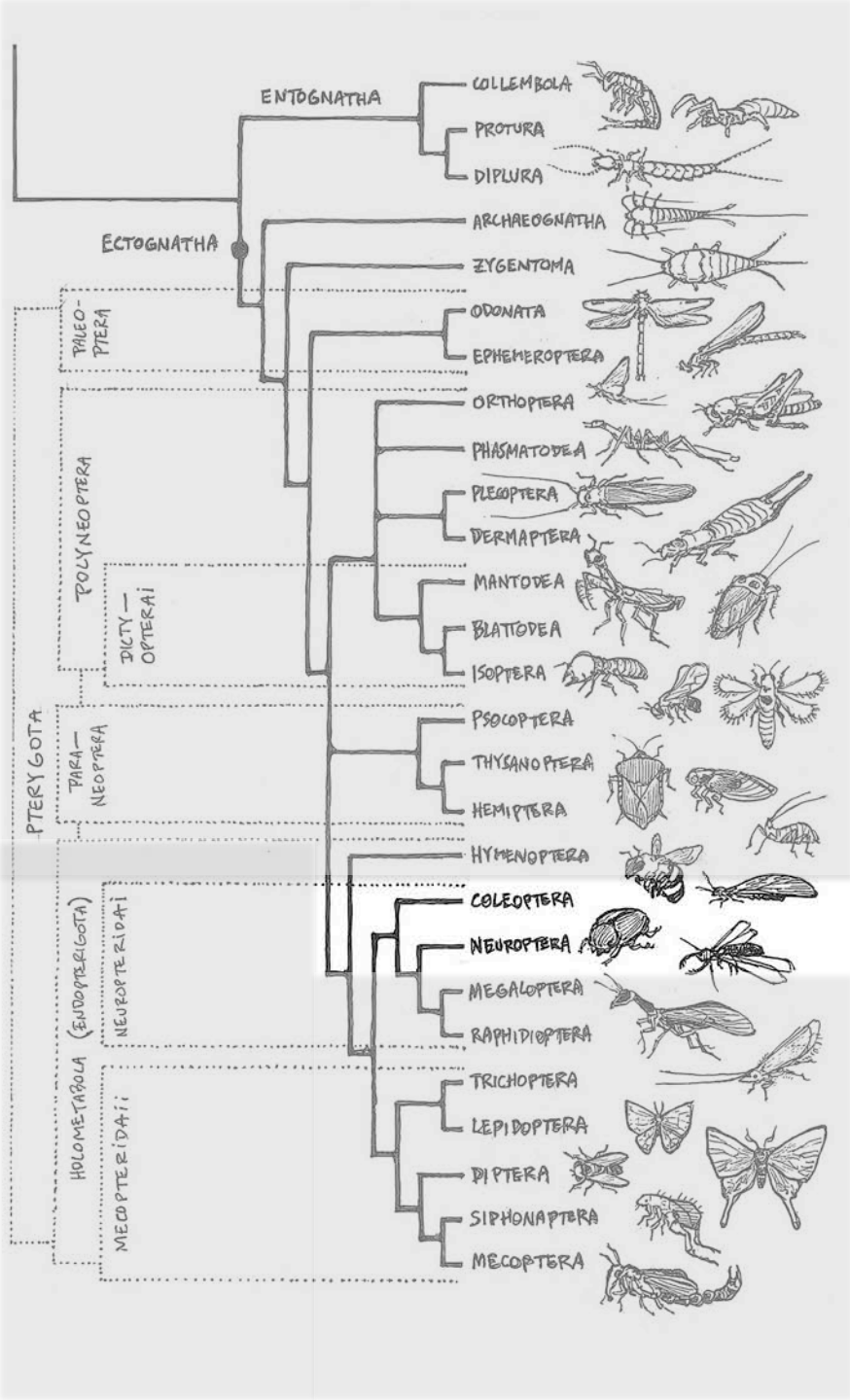


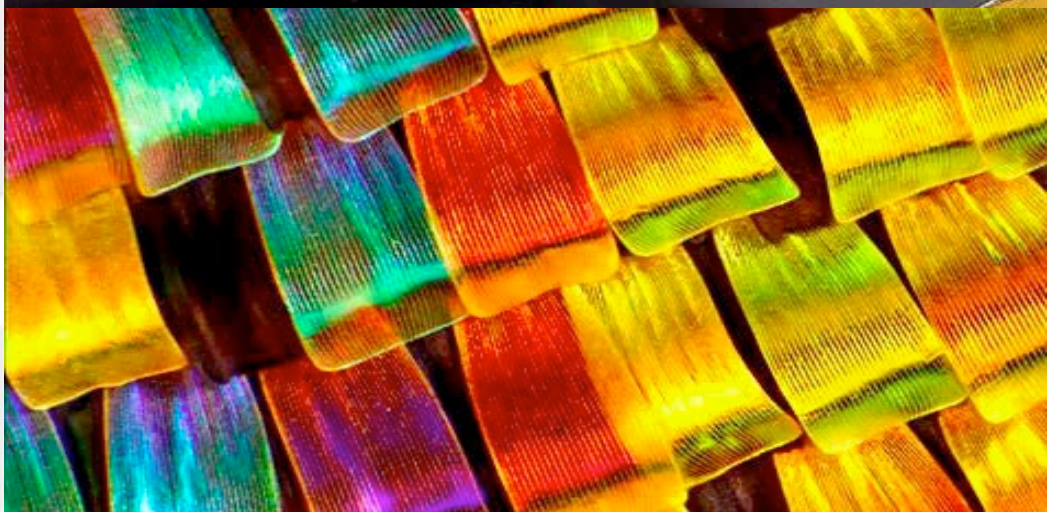
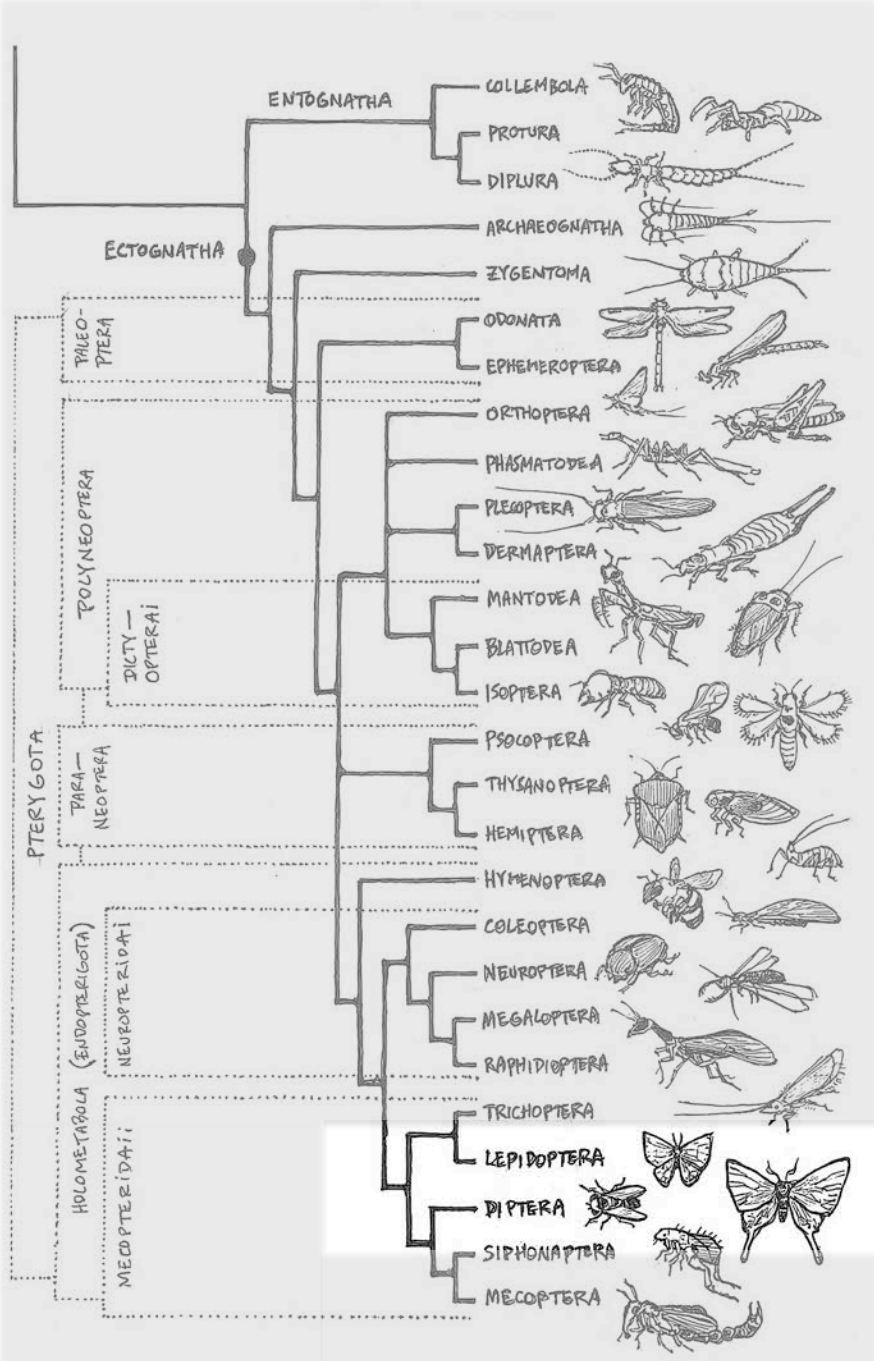


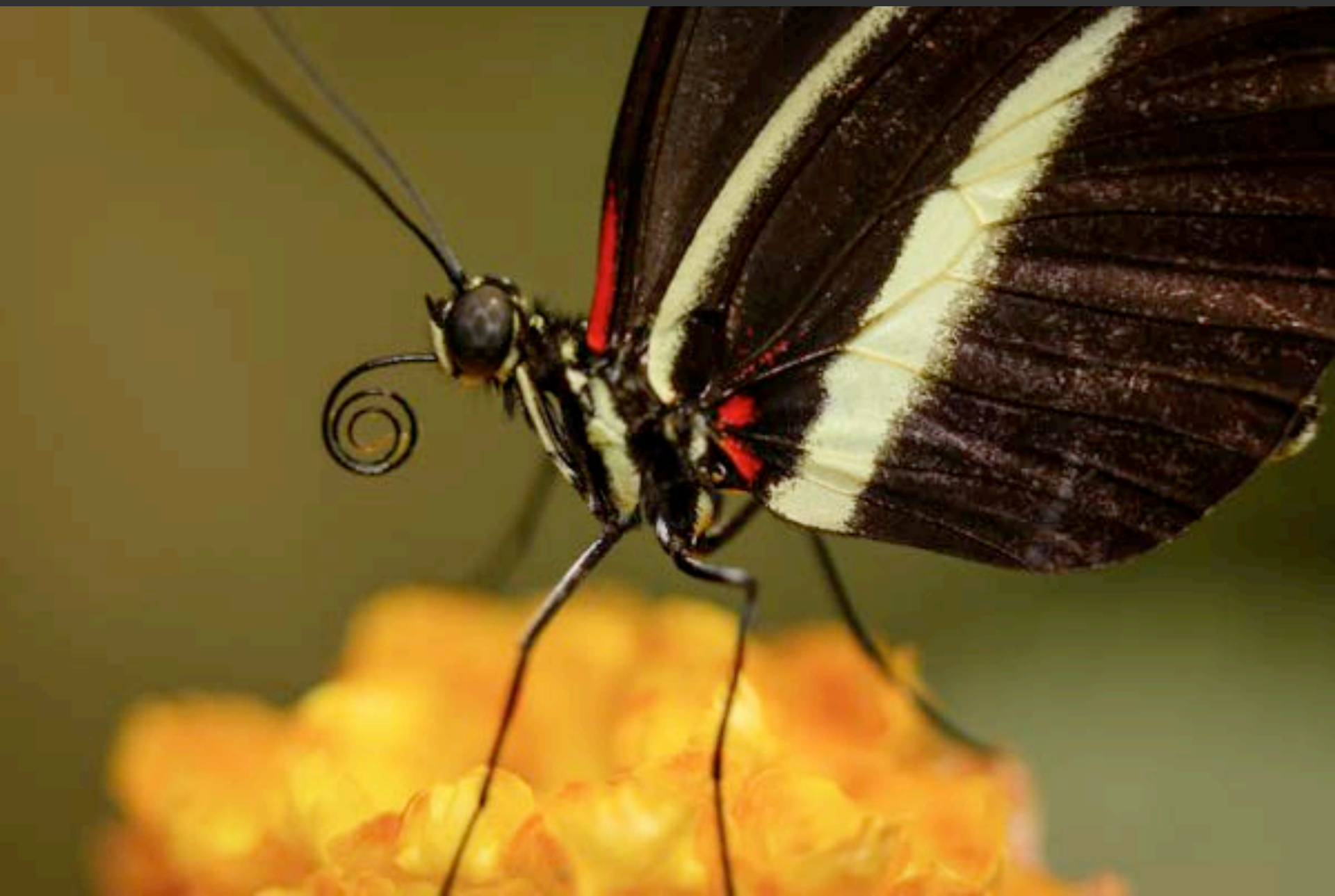


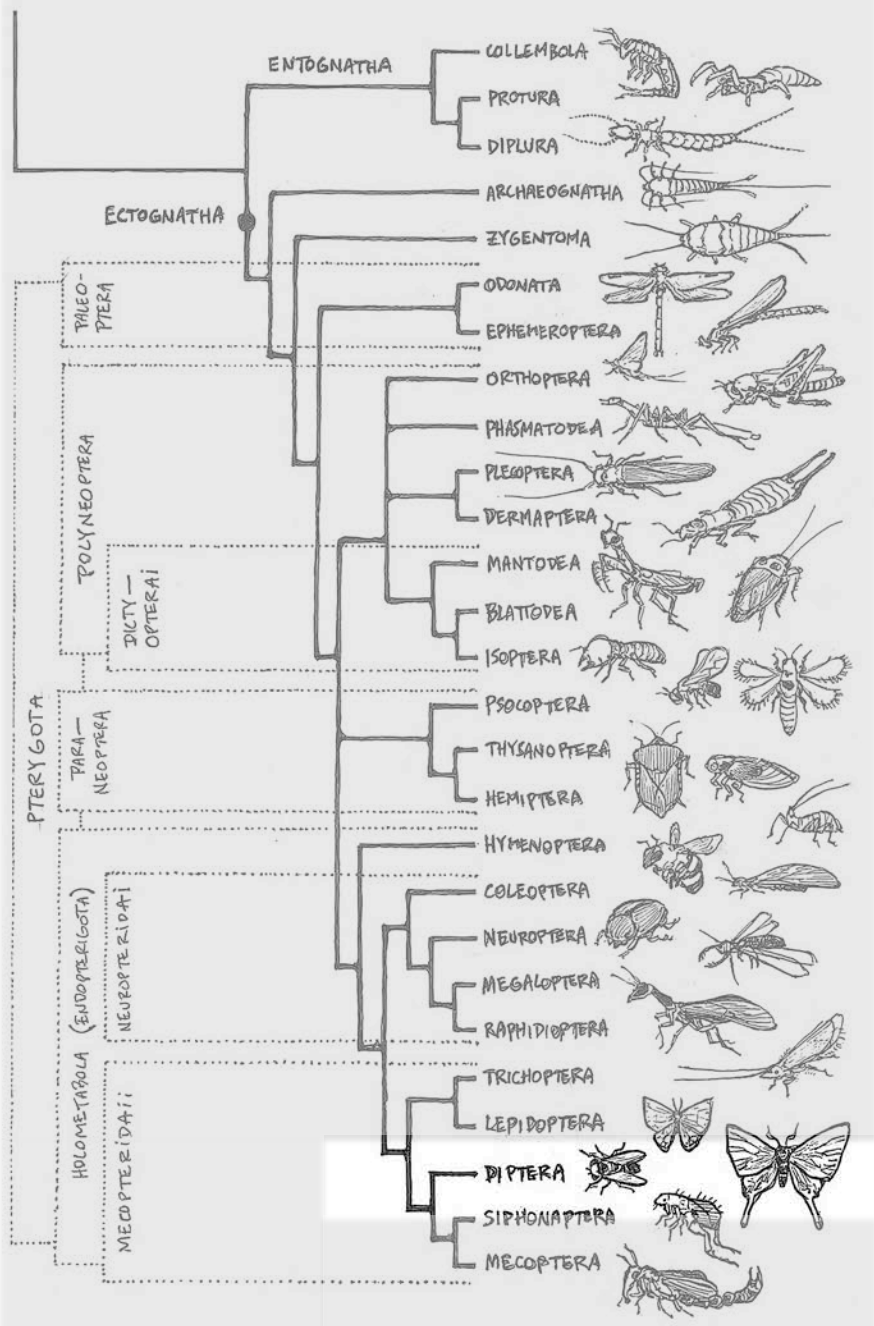












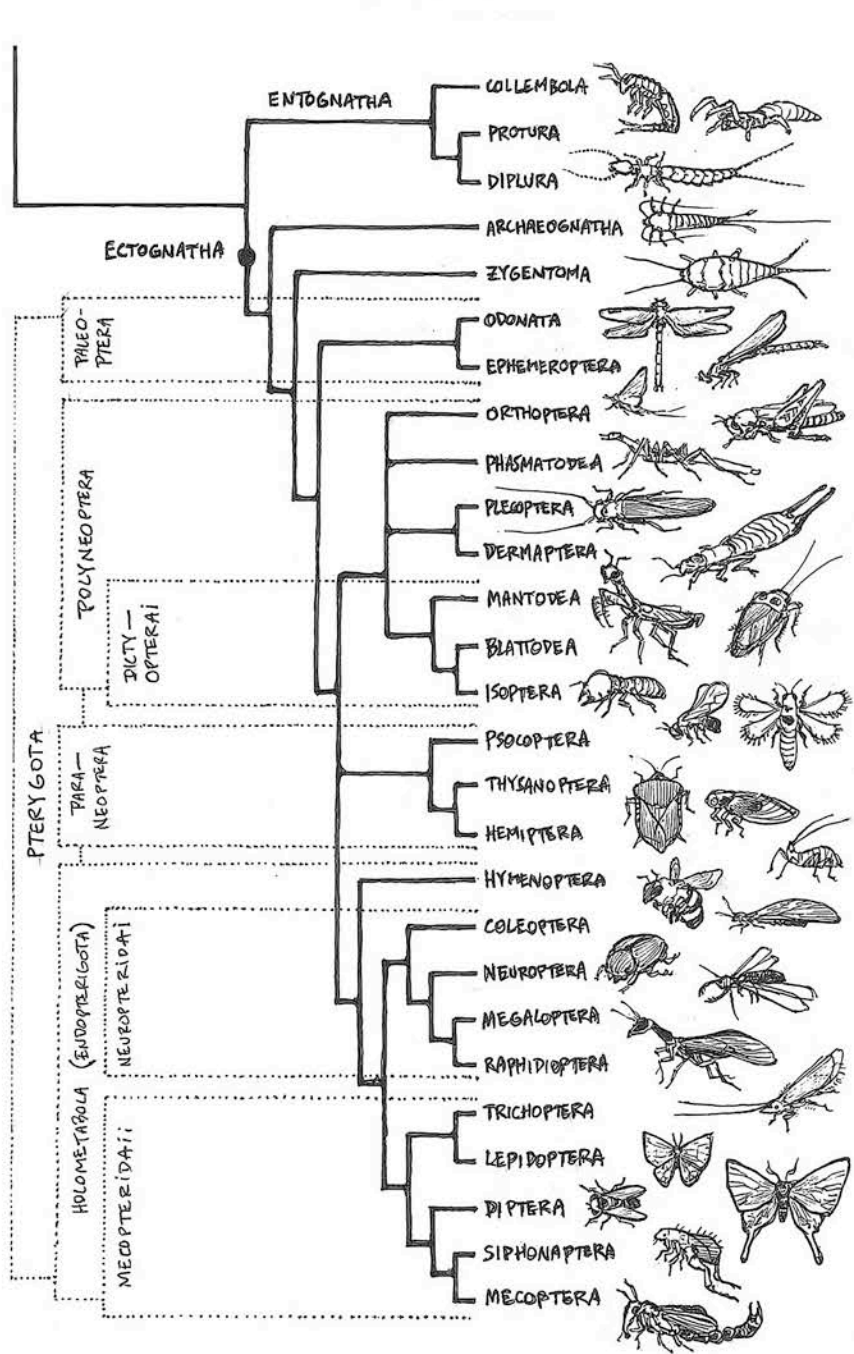










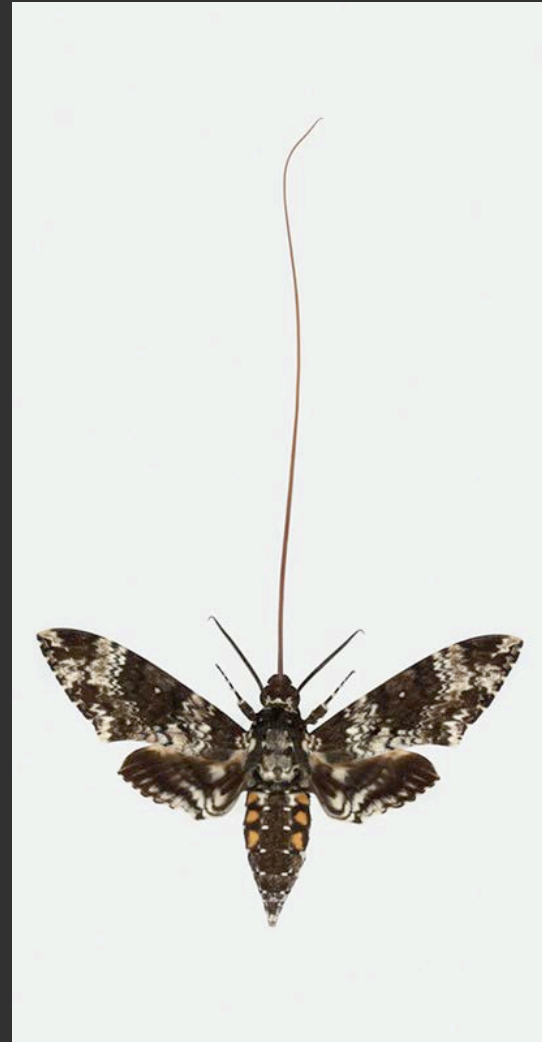




The more specific the relationship between the flower and pollinator, the more likely the pollen of that species will be successfully transferred and that the plant's pollen will not be wasted on the flower of a different species.



The more specific the relationship between the flower and pollinator, the more likely the pollen of that species will be successfully transferred and that the plant's pollen will not be wasted on the flower of a different species.



**70% of global crops  
require insect pollination**









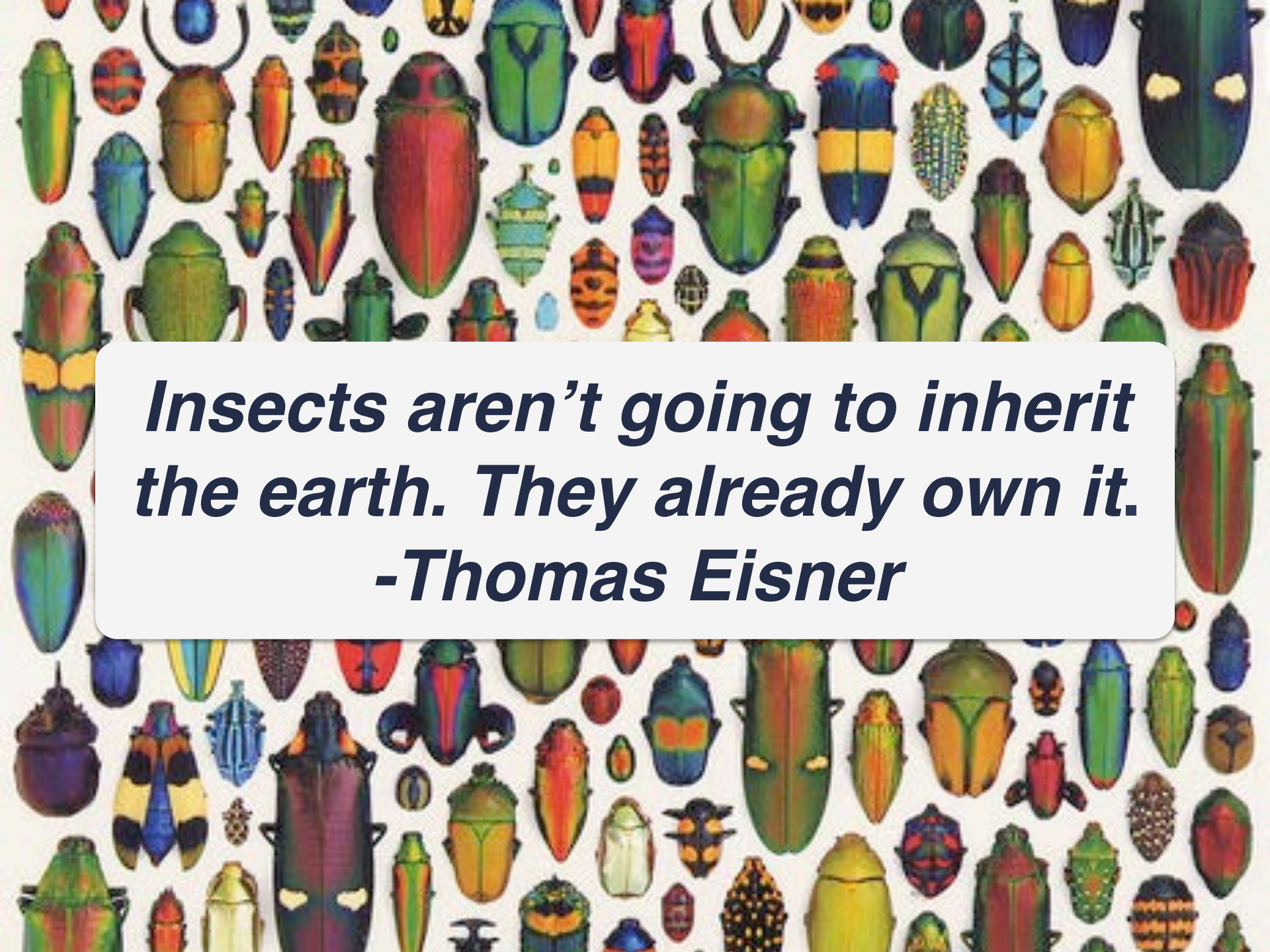












***Insects aren't going to inherit  
the earth. They already own it.  
-Thomas Eisner***

# Key to Insect Orders



## Features

Wing Number 

Wing Shape 

Wing Texture 

Wing Development 

Wing Venation 

Wing Base 

Forelegs 

Hind Legs 

Tarsomere Number 