

Emerald Ash Borer Identification

Larvae Identification: Present in tree, under bark

Bell-Shaped Body Segments



© David Cappaert, Michigan State University, Bugwood.org

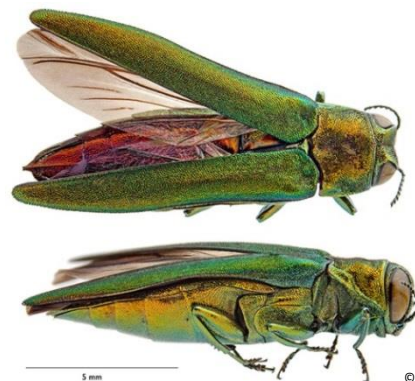
“S” Shaped Galleries



© Mark Whitmore, Cornell University

Adult Identification: Present late May-mid August

- Color: Metallic green, bronze undertones
- Size: 1/2” long and 1/6” wide; size of tic-tac candy



5 mm

© Kent Loeffler, Cornell University

Ash Tree Identification

- Diamond patterned bark
- Pinnately compound leaves (5-11 leaflets)



© Keith Kanoti, Maine Forest Service, Bugwood.org



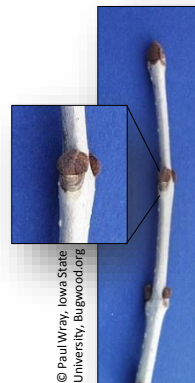
© Tom DeGomez, University of Arizona, Bugwood.org



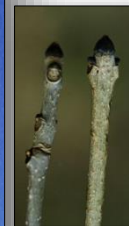
© Rebecca Hargrave, Cornell Cooperative Extension

Ash Twig Identification

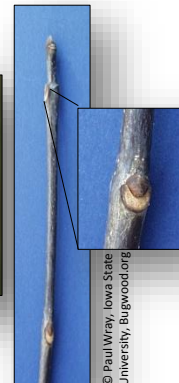
- Opposite branching
- Stout buds, prominent leaf scars



© Paul Wray, Iowa State University, Bugwood.org



© Bill Cook, Michigan State University, Bugwood.org



© Paul Wray, Iowa State University, Bugwood.org

Signs and Symptoms of EAB

Canopy thinning

> 30% pesticides may not be effective



© Mark Whitmore, Cornell University

D-Shaped Exit Hole



© Mark Whitmore, Cornell University



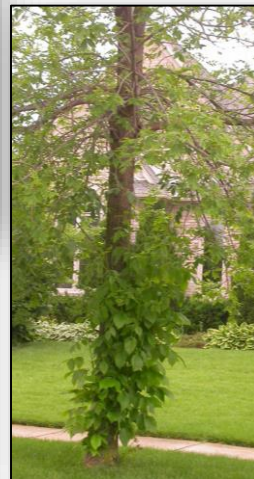
© Mark Whitmore, Cornell University

Vertical Bark Cracks

Low population levels

Epicormic sprouting

(water sprouting)
Heavily infested trees



© David Cappaert, Michigan State University, Bugwood.org

Wood-pecker damage

Best observed in winter, after rain



© Mark Whitmore, Cornell University

Helpful resources

Report an infestation at : <http://nyis.info/eab> (report a sighting tab),

For updated information including managing EAB go to: www.emeraldashborer.info

Webinars and training videos <http://www.emeraldashborer.info/eabu.php>

EAB cost calculator: <http://extension.entm.purdue.edu/treecomputer/>