

# Asian Longhorned Beetle

**Larvae Identification:** Present in tree, just under bark or deep in the wood of the tree depending on size

**Adult Identification:** Present late Spring-Fall

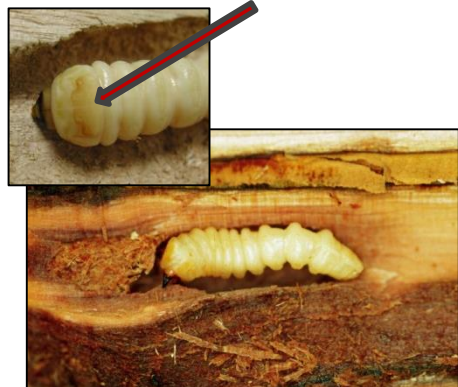
- Color: Shiny black, distinct white patches, striped antennae, bluish feet
- Size:  $\frac{3}{4}$ -1  $\frac{1}{2}$ " long; Antennae at least as long as body

Large galleries



© Kenneth R. Law, USDA APHIS PPQ, Bugwood.org

Brown shield on back of head



© Steven Katovich, USDA Forest Service, Bugwood.org



© Joe Boggs, Ohio State University, Bugwood.org

## ALB Preferred Host Plants

- Maple
- Willow
- Boxelder
- Elm
- Horse chestnut
- Buckeye
- Birch
- Poplar

## Maple Tree Identification

- Single leaf blade with 3-5 lobes, notches between lobes
- Leaves, buds & twigs in pairs opposite each other
- Double Samara



© Steven Katovich, USDA Forest Service, Bugwood.org



© Wendy VanDyk Evans, Bugwood.org



© Paul Wray, Iowa State University, Bugwood.org

## Signs and Symptoms of ALB

### Crown dieback & early fall color



© Dennis Haugen, USDA Forest Service, Bugwood.org

### Round exit hole



© Daniel Hermis, The Ohio State University, Bugwood.org

### Oviposition scar



© Pennsylvania Department of Conservation and Natural Resources - Forestry, Bugwood.org

### "Sawdust" at tree base



Photo: Michael Bohne

### Oozing sap, dark staining



© Dennis Haugen, USDA Forest Service, Bugwood.org

Report an infestation + more information: <http://asianlonghornedbeetle.com/>  
 Fantastic guide to ALB ID: <http://na.fs.fed.us/pubs/alb/alb-and-host-trees-09-12-2012-screen.pdf>  
 Key for tree ID based on bark and twigs (not professional key but helpful)  
<http://treebarkid.com/index.php/general-bark-id-key>