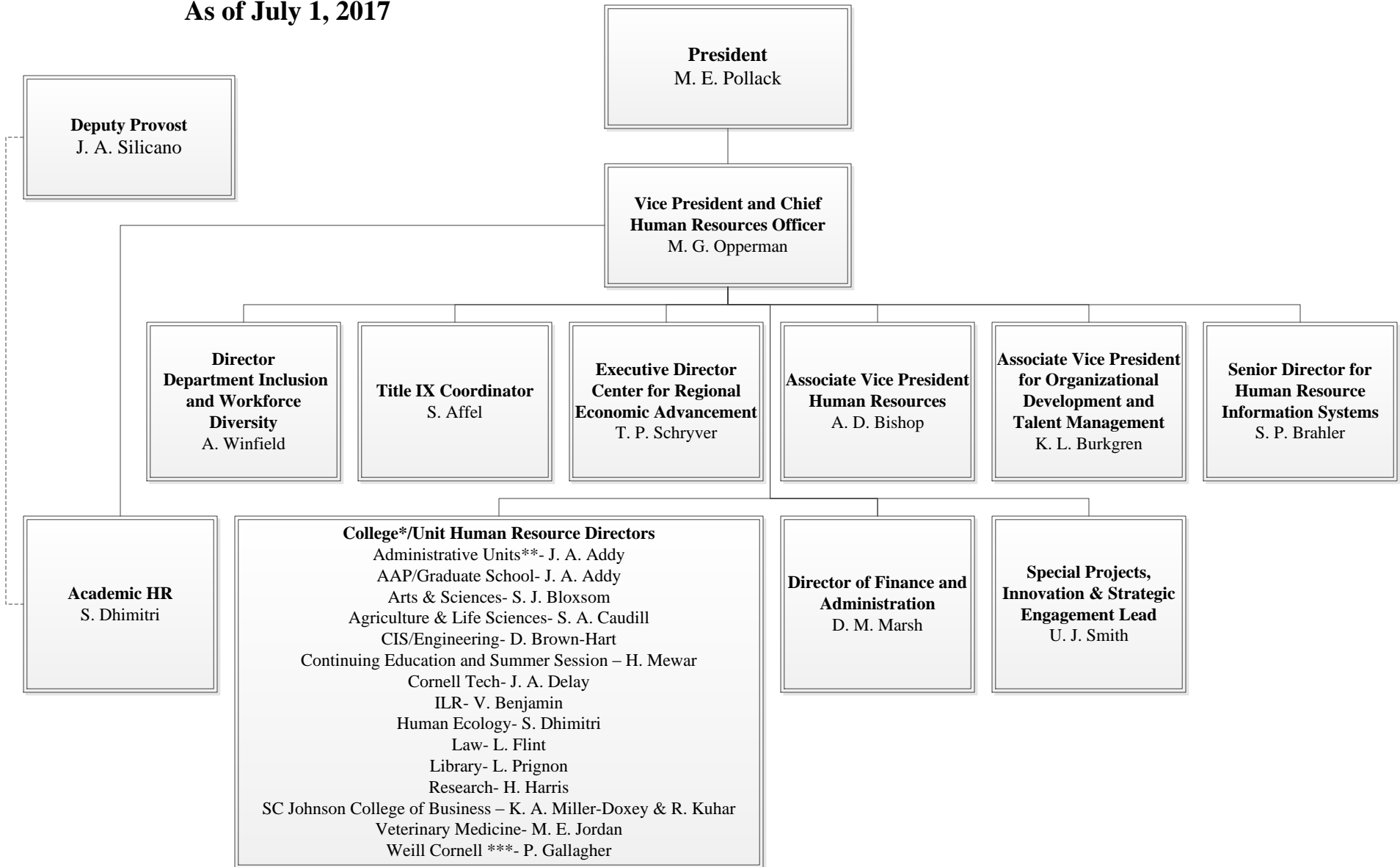


# VICE PRESIDENT AND CHIEF HUMAN RESOURCES OFFICER

As of July 1, 2017



\* Dual reporting to college leadership

\*\* Direct report to Associate Vice President for HR, Administrative Units provides HR generalist services to the following organizations: President’s Office, Provost’s Office, All Vice Provost (excluding Research), All Vice Presidents and Executive Vice President.

\*\*\* Direct report to the Executive Vice Provost for Administration and Finance, Weill Cornell Medicine