

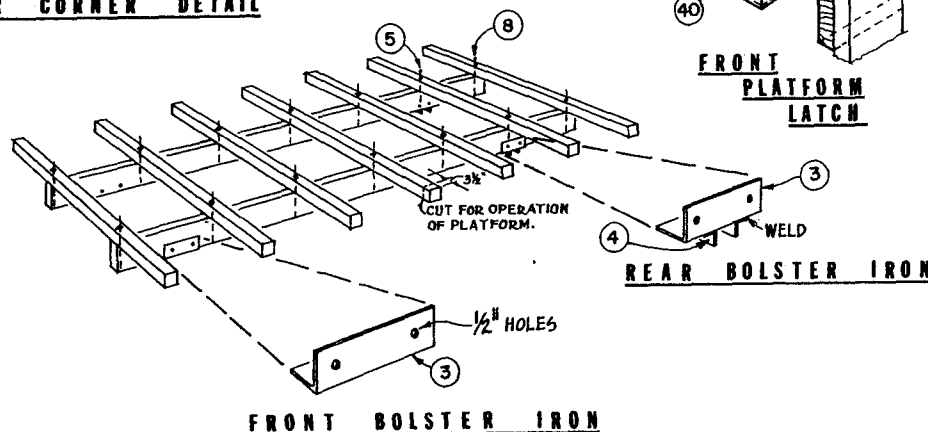
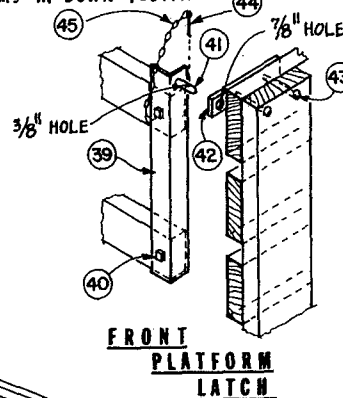
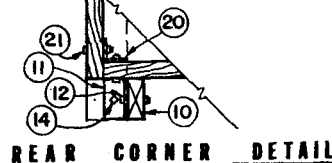
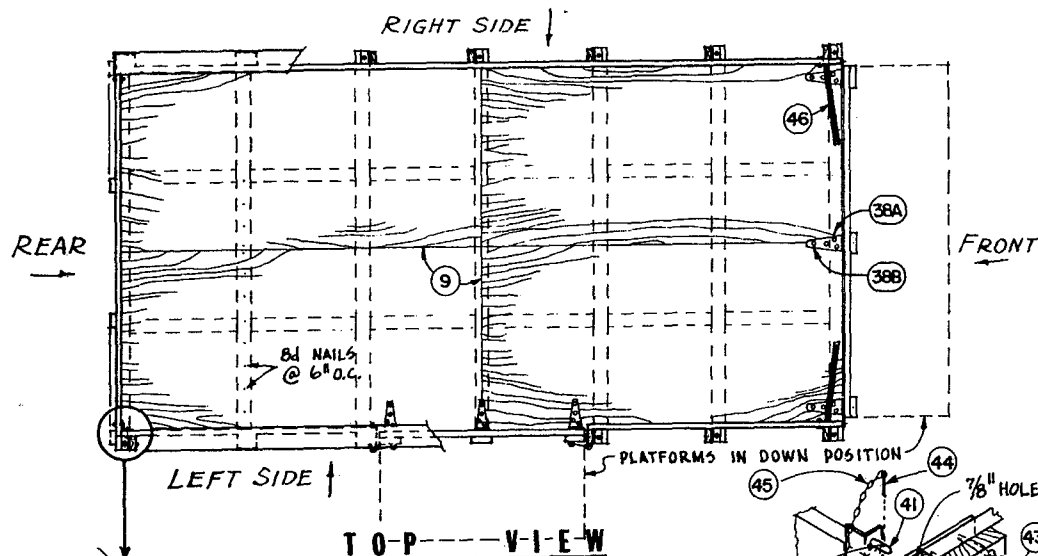
SCALE: 1/2"=1'-0" UNLESS OTHERWISE NOTED.

BASED ON: UNIV. OF WISC. PLAN 300N.



WAGON RACK FOR TOSSED BALES
SIDE & FRONT OPENING

WISC. '73 EX. 6173 SHEET 1 OF 2



PART NO.	NAME	NO. PCS.	DIMENSIONS
1	MAIN SILL	2	4" x 8" x 16'
2	CROSS SILLS	7	4" x 4" x 8' 7"
3	BOLSTER IRON	4	4" x 4" x 1/4" x 12" ANGLE IRON
4	BOLSTER IRON	4	2" x 2" x 1/4" x 4" ANGLE IRON
5	BOLTS FOR CROSS SILLS	10	1/2" x 12" CARRIAGE BOLTS
6	BOLTS FOR BOLSTER IRON	8	1/2" x 4 1/2" CARRIAGE BOLTS
7	CROSS TIE	2	2" x 4" x 42" ±
8	BOLTS END CROSS SILLS	4	1/2" x 13" CARRIAGE BOLTS
9	FLOOR	4	3/4" x 4" x 8' EXTERIOR PLYWOOD
10	STUDDING	15	2" x 4" x 8' 4"
11	BRACKET	13	2" x 2 1/2" x 1/4" - 3 1/2" ANGLE IRON
12	BOLTS FOR BRACKET	13	3/8" x 2" CARRIAGE BOLTS
13	BOLTS FOR STUDDING	15	3/8" x 5 1/2" CARRIAGE BOLTS
14	BOLTS FOR BRACKET	13	3/8" x 4" CARRIAGE BOLTS
15	SIDE RAIL	12	2" x 4" x 5' 8" ±
15A	SIDE RAIL	7	2" x 4" x 16'
15B	REAR RAIL	7	2" x 4" x 8'
16	BOLTS FOR SIDE RAILS	97	3/8" x 5 1/2" CARRIAGE BOLTS
16A	BOLTS FOR REAR RAILS	14	3/8" x 3 1/2" CARRIAGE BOLTS
17	TOP RAIL	1	2" x 8" x 16'
18	TOP CAP	2	2" x 6" x 16'
19	LAG SCREWS FOR TOP CAP	16	3/8" x 4"
20	CORNER ANGLE	2	2" x 2" x 3/16" x 7' 3" ANGLE IRON
21	BOLTS FOR CORNER ANGLE	28	3/8" x 2 1/2" MACHINE BOLTS
22	BRACES	2	2" x 4" x 10'
23	BRACES	2	2" x 4" x 11'
24	BRACES	2	2" x 4" x 8' 9"
25	CHAIN	5	3/16" PROOF COIL CHAIN 5'
26	CHAIN HOOK	5	1/4" ROD 12"
27	BOLTS FOR CHAIN	10	3/8" x 2 1/2" MACHINE BOLTS
28	FOLDING PLATFORM	4	2" x 6" x 4' 6" ±
29	FOLDING PLATFORM	3	2" x 6" x 2' 4"
30	BOLTS FOR PLATFORM	18	3/8" x 3 1/2" CARRIAGE BOLTS
31	HINGES FOR PLATFORM	1 1/2 PR.	8" STRAP HINGES
31A	BOLTS FOR HINGES	8	5/16" x 1 1/2" CARRIAGE BOLTS
31B	BOLTS FOR HINGES	4	5/16" x 5" CARRIAGE BOLTS
31C	BOLTS FOR HINGES	12	5/16" x 3 1/2" CARRIAGE BOLTS
32	CHAIN SUPPORT	2	3/16" PROOF COIL CHAIN 3 1/2'
32A	CHAIN SUPPORT BOLTS	2	3/8" x 2 1/2" CARRIAGE BOLTS
32B	CHAIN SUPPORT BOLTS	2	3/8" x 4" CARRIAGE BOLTS
33	EYE BOLT	4	1/4" x 4" EYE BOLT
33A	HOOK	2	HOOK 6" OR MORE
34	FRONT PLATFORM	3	2" x 6" x 2' 4"
35	FRONT PLATFORM	4	2" x 6" x 7' - 8 3/4"
36	CHAIN SUPPORT	2	3/16" PROOF COIL 3 1/2'
36A	CHAIN SUPPORT BOLTS	2	3/8" x 2 1/2" CARRIAGE BOLTS
36B	CHAIN SUPPORT BOLTS	2	3/8" x 4" CARRIAGE BOLTS
37	HINGES	1 1/2 PR.	10" STRAP HINGES
38	BOLTS FOR HINGES	12	5/16" x 3 1/2" CARRIAGE BOLTS
38A	BOLTS FOR HINGES	6	5/16" x 5" CARRIAGE BOLTS
38B	BOLTS FOR HINGES	6	5/16" x 1 1/2" CARRIAGE BOLTS
39	FRONT LATCH PART	2	2" x 2" x 1/4" x 1' 8" ANGLE IRON
40	BOLTS FOR FRONT LATCH	4	3/8" x 2 1/2" CARRIAGE BOLTS
41	FRONT LATCH PIN	2	3/4" x 3" STEEL WELD TO ANGLE
42	FRONT LATCH PART	2	3/8" x 1 1/2" x 7" STEEL
43	BOLTS FOR PART 42	4	3/8" x 4" MACHINE BOLTS
44	COTTER PIN	2	1/4" x 3"
45	CHAIN	2	1/16" LINK STOCK - 6"
46	BRACE	2	1 1/2" x 1 1/2" x 1/8" x 3' 7" ANGLE
47	BOLTS FOR BRACE	2	3/8" x 4 1/2" MACHINE BOLTS
48	BOLTS FOR BRACE	2	3/8" x 5" MACHINE BOLTS
49	BOLTS FOR BRACE	26	3/8" x 3 1/2" CARRIAGE BOLTS
	PLAIN WASHERS	300	3/8"
	PLAIN WASHERS	24	1/2"
	NAILS	1 #	8 d NAILS

BOLT LENGTHS FOR STANDARD DIMENSION OF COMMERCIAL LUMBER
 50 BOLTS FOR FRONT PLATFORM 18 3/8" x 3 1/2" CARRIAGE BOLTS



WAGON RACK FOR TOSSED BALES
 SIDE & FRONT OPENING

WISC. '73 EX. 6173 SHEET 2 OF 2

Disclaimer

This site makes available conceptual plans that can be helpful in developing building layouts and selecting equipment for various agricultural applications. These plans do not necessarily represent the most current technology or construction codes. They are not construction plans and do not replace the need for competent design assistance in developing safe, legal and well-functioning agricultural building system. The LSU Agriculture Center, the Mid-West Plan Service, the United States Department of Agriculture and none of the cooperating land-grant universities warranty these plans.