

# TEACHING WITH TECHNOLOGY

it.cornell.edu/teaching

August 2013

IN THIS ISSUE

## Blackboard Updates

- » Managed Enrollment
- » New features in Blackboard 9.1

## Classroom Technologies

- » New lecture capture options
- » Electronic lab notebooks
- » Cornell Survey Tool
- » Sign out an iPad for teaching!

## Academic Technology Center

- » Student Technology Assistant Program

## Training & Resources

- » Get trained in our new classroom technologies
- » New look for help sites

## Blackboard Updates

### Synchronize student enrollments using Managed Enrollment

To synchronize student enrollments with official class rosters, use the tab in Faculty Center, titled «Blackboard course site request». Detailed instructions on how to submit a course site request in Faculty Center are available at: <http://bit.ly/atc-bb-8>

### New Features in Blackboard 9.1

Added in June:

- Global Navigation
- My Blackboard
- New Content Editor
- New Calendar
- Improved Discussions
- Assessment Analysis
- Retention Center



Check it out!

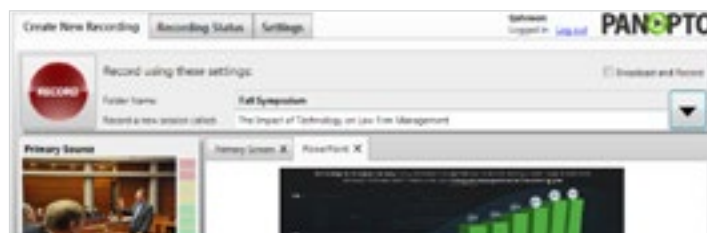
<http://bit.ly/atc-bb-9>

## Classroom Technologies

### Lecture Capture options for Fall 2013

Three options are available to record lectures, either at your desk or in the classroom.

- Panopto is a no-cost software solution that allows you to record lectures at your desk, or in classrooms that have webcams installed.



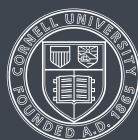
- MediaSite is a hardware-based solution installed in specific colleges, and is also available for a fee for special events.
- VideoNote is an outside vendor that will record your lecture in your classroom and post it on the internet. A subsidy, sponsored by The Office of the Provost, is available to defray the cost.

Check it out!

<http://videohelp.cit.cornell.edu>

Need Help?

[atc\\_support@cornell.edu](mailto:atc_support@cornell.edu)





## Classroom Technologies

### Electronic lab notebooks - LabArchives

LabArchives can be used by students and researchers to organize laboratory data, save historical versions of files, and share information and collaborate with others. It can be used in various types of laboratories, including engineering, chemistry, biology, and more. It's now being offered as a campus-wide service in Fall 2013.

Cornell faculty, staff, and researchers can start using LabArchives by going to [shib.labarchives.com](http://shib.labarchives.com) and following the instructions to log in using their Cornell NetID. Cornell-specific documentation is currently being developed; for now, please visit the LabArchives help site.

#### Check it out!

<http://mynotebook.labarchives.com>

#### Need Help?

[atc\\_support@cornell.edu](mailto:atc_support@cornell.edu) <http://bit.ly/atc-labarchelp>

### Did you know that we can digitize your course materials at no charge?

Have VHS tapes that you'd like uploaded to Blackboard? Or 35mm slides that need to be digitized? Simply drop off your media with our staff at the Academic Technology Center! For more information and a full list of services, check out [atc.cit.cornell.edu/services](http://atc.cit.cornell.edu/services)

### Using the Cornell Survey Tool for custom course evaluations

Did you know that Cornell has a campus license for a professional web survey tool? Among other things, the survey tool, called Qualtrics, can be used to do custom course evaluations tailored to the particular needs of your class.

After a short learning curve to understand how it works, it's easy to write and launch surveys on your own. Responses can be reviewed in an automatically generated report or downloaded as a data file for more detailed analysis.

#### Check it out!

<http://surveys.cornell.edu/>

#### Need Help?

[atc\\_support@cornell.edu](mailto:atc_support@cornell.edu) <http://bit.ly/cornellsurveys>

### Sign out an iPad for teaching

Academic Technologies has a limited number of iPads that can be loaned to faculty for use in teaching. To apply, visit: <http://bit.ly/atc-ipad>



## Ongoing Pilots

### Join a pilot with lynda.com!

Join a pilot with lynda.com, and access more than 1,500 high quality, detailed, online skills training courses for people at all experience levels. The pilot will be available through the Fall 2013 semester and will be limited to 1,000 users. We have reserved space for faculty and students, so sign up now!

Faculty can use the content on lynda.com to:

- Supplement curricula – assign tutorials for a project or course work
- Encourage students to use self-paced learning
- Improve the ability to teach online
- Encourage professional development

#### Interested in joining the lynda.com pilot?

Sign up online at: <http://bit.ly/atc-lynda-signup>

#### Like to find out more about the subjects offered?

Visit: <http://bit.ly/atc-lynda-all>

#### Want to add lynda.com to your curricula?

Skip the online sign-up process and send a class list to [atc\\_support@cornell.edu](mailto:atc_support@cornell.edu) with your first name, last name, and email address, and the same information for each student.

#### Questions? Need Help?

[atc\\_support@cornell.edu](mailto:atc_support@cornell.edu)





## Academic Technology Center

### Technology centers help with instructional materials

Two Academic Technology Centers (ATC) are available on campus to help prepare or develop instructional technology resources for courses.

ATC provides access to computers, software, and multimedia equipment, and help in using technology through the Student Technology Assistant Program (STAP).

#### Services provided by the student assistants include:

- Blackboard support
- Assistance with preparing multimedia course content for classroom or web-based delivery
- Assistance with classroom presentations (including PowerPoint presentations)
- Audio and video services
- Podcasting support
- Updating course web sites
- Assistance with online surveys
- Assistance with collaborative tools, including blogs and wikis
- Scanning and digitizing—convert your old visual material to a digital format, and make it easier to distribute and include in presentations.

#### Have questions? Need help?

Visit us in person at either of our two locations!

📍 124 CCC

9am-5pm Monday–Friday  
*Closed on university holidays.*

📍 G27 Stimson

1pm-5pm Monday–Friday  
during the semester  
*Closed on university holidays.*



## Training & Resources

### Technology training for Instructors

Blackboard training classes are being held before fall classes begin. For more information, or to register, visit [it.cornell.edu/atregister](http://it.cornell.edu/atregister).

Face to Face classes being held this semester:

- LabArchives Electronic Lab Notebook Software
- Getting Started with Blackboard
- Blackboard Assessments and Grade Center
- Turnitin

**Can't make a class?** E-mail us at [atc\\_support@cornell.edu](mailto:atc_support@cornell.edu) and we'll work with you at your convenience.

#### Need Help?

✉ [atc\\_support@cornell.edu](mailto:atc_support@cornell.edu)

### New help-sites

New websites for Blackboard, polling, video, and more are now available. There is help for faculty who want to use these services for their courses. For example, Videohelp provides information about creating video recordings, uploading videos to a Blackboard course, posting video online, and captioning videos.

#### Check them out!

 [pollinghelp.cit.cornell.edu](http://pollinghelp.cit.cornell.edu)

 [bbhelp.cit.cornell.edu](http://bbhelp.cit.cornell.edu)

 [eportfoliohelp.cit.cornell.edu](http://eportfoliohelp.cit.cornell.edu)

 [videohelp.cit.cornell.edu](http://videohelp.cit.cornell.edu)

 [collabhelp.cit.cornell.edu](http://collabhelp.cit.cornell.edu)



# TEACHING WITH TECHNOLOGY

it.cornell.edu/teaching

August 2013

## New to Cornell?

Academic Technologies offers many technology services and resources to support your teaching and learning needs.

## Services

- Course web sites
- Webconferencing
- Collaboration tools: discussion boards, blogs, and Confluence wiki
- Online tutorial development
- Self-service video recording, lecture capture, video production of course materials, and video storage
- Web-based surveys (Qualtrics)
- Assessment tools: quizzes and e-portfolios
- i>Clicker classroom polling
- Computer labs for instruction. See the Computing Labs map to find the resources you need: <http://mapping.cit.cornell.edu/publiclabs/map>

## Getting Help

### Self Help

Visit our help sites for how-tos and answers to frequently asked questions!

 [pollinghelp.cit.cornell.edu](http://pollinghelp.cit.cornell.edu)

 [bbhelp.cit.cornell.edu](http://bbhelp.cit.cornell.edu)

 [eportfoliohelp.cit.cornell.edu](http://eportfoliohelp.cit.cornell.edu)

 [videohelp.cit.cornell.edu](http://videohelp.cit.cornell.edu)

 [collabhelp.cit.cornell.edu](http://collabhelp.cit.cornell.edu)

### Set up a consultation with an Academic Technologist

We provide academic technology consultations to assist in selecting the best technologies to support instructional goals, engage students, enhance lectures, encourage collaboration and manage large courses.

### Contact the Academic Technology Center

**Web** [atc.cit.cornell.edu](http://atc.cit.cornell.edu)

**Email** [atc\\_support@cornell.edu](mailto:atc_support@cornell.edu)

**Call** 607-255-9760 9am-5pm, Monday–Friday

**Visit** 124 CCC 9am-5pm, Monday–Friday  
G27 Stimson 1pm-5pm, Monday–Friday